



PENNWEST

reserve

R

Table of Contents

Pg	Name	Model #	Size	Sq Ft
Ranch Models				
4	Generational Suite	3P2007R	4268/64	2122
5-7	The Nextflex Family		1777-2150	
8	Silverwood	2P2001R	2840	1093
9	Berkshire	2P2002R	2844	1203
10	Firleigh	2P2003R	2848	1312
11	Easton	2P2004R	2848	1312
12	Beechwood	2P2005R	2852	1421
13	Saddlewood	2P2006R	2852	1421
14	Mapleton	2P2007R	2852	1421
15	Kingston	2P2008R	2852	1421
16	Woodbury	2P2009R	2856	1531
17	Rosemont	2P2010R	2856	1456
18	Ashton	2P2011R	2856/48	1421
19	Willowbee	2P2012R	2860	1640
20	Elderberry	2P2014R	2860	1560
21	Elderberry Photos			
22	Willowbrooke	2P2013R	2860	1640
23	Danbury	2P2016R	2860	1647
24	Charlestown	2P2017R	2860/52	1464
25	Hebron	2P2018R	2864	1749
26	Washington	2P2019R	2864/60	1676
27	Bismarck	2P2021R	2868	1768
28	Carthage	2P2023R	2872	1852
29	Branston	2P2024R	2872/64	1704
30	Vienna	2P2025R	2876	2077
31	Birchton	2P2026X	3238	1178
32	Goldsboro	3P2001R	4242/36	1253
33	Sandalwood	3P2002R	4252	1781
34	Hollingsworth	3P2003R	4252/44	1646
35	Chesterton	4P2001R	4252	1995
Cape Models				
37	Nantucket	2PC2001R	2836	883
38	Bayshore	2PC2002R	2840	1093
39	Wilmington	2PC2003R	2840	1093
40	Bayview	2PC2004R	2848	1312
41	Norwick	2PC2005R	2848	1312
42	Baycrest	2PC2006R	2852	1421
43	Livingston	2PC2007R	2856	1531



French Country Oak
Mission Flat Panel



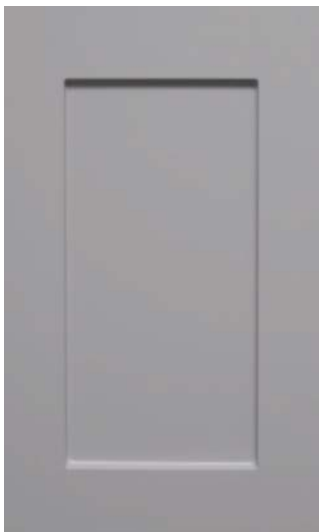
Barnwood Oak
Mission Flat Panel



Warm Sienna
Mission Flat Panel



Hickory
Raised Panel



Shadow Grey
Mission Flat Panel



White
Mission Flat Panel



Precision Cut and Dadoed Construction Fastened and Hot Glued - Ensures a Long Lasting and Square Cabinet Box

3/4 Overlaid Cabinet Doors & Drawer - Limited Exposure of Cabinet Stiles

3/4" Thick Shelving with Finished Edges - Prevents Warping of Shelves

Base and Wall Cabinet Adjustable Shelving - Fit Your Lifestyle

3/4" Face Frames - Durable and Securely Holds Fasteners for Long Lasting Use

Pocket Screws - Ensure a Strong and Square Frame

Dove-Tail Constructed Drawers - Superior Drawer Strength

Undermount Soft Close Drawer Guides

Concealed and Recessed Hinges - Superior Door Strength

Recessed Toe Kick - Work at Counters with Ease

No Exposed Hanging Cleats- More Storage and Cleaner Look

KCMA Testing

- Overhead Cabinets Rated to 500 pound Capacity
- Drawers Opened 28,000 Times with Weight
- Cabinet Doors Opened 25,000 Times
- Extreme Testing of Cabinet Finish



Evermore Custom Cabinets endure a series of rigorous tests, measuring structural integrity. Cabinet doors, drawers and even the finish are tested before earning the KCMA Cabinet Certification.

Visit www.KCMA.org
for more information

Generational Suite

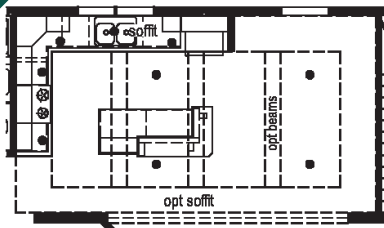
This home is designed specifically for multi-generational living. Integral to the layout of this home is an all inclusive residence including its own entry, living area, kitchen, bedroom, and bath. Perfect for a family member needing extra care, a teen wanting their own space, or an out of town guest not wanting to intrude. Consider this home or custom design your own when you foresee the need for extra space.



3P2007R

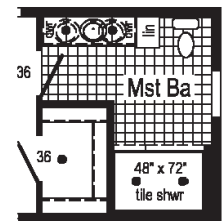
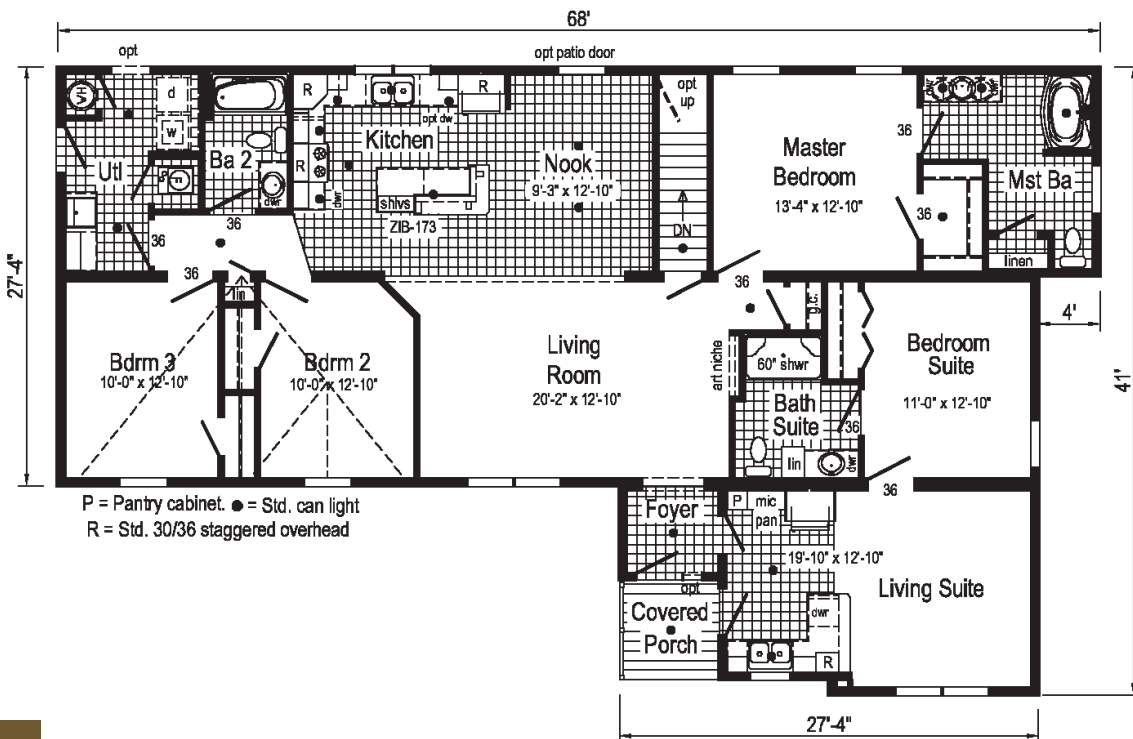
42x68/64 Approx. 2122 sq ft

Some features shown may be optional or added on-site by others.

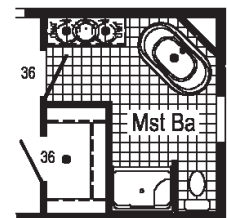


Kitchen with Soffit

Opt. Kitchen & Nook
Drywall Soffit and Beams



Optional
4' x 6' Tile
Shower



Optional Glamour
Bath



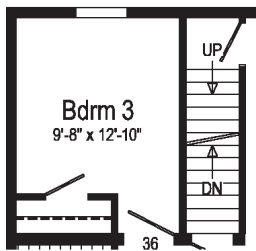
Nextflex Ranch



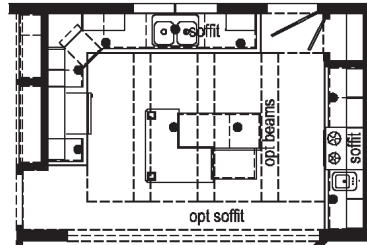
2P2020R

28x66/64 Approx. 1777 sq ft

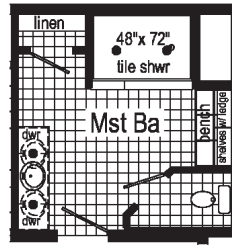
Some features shown may be optional or added on-site by others.



Optional Attic Stairs

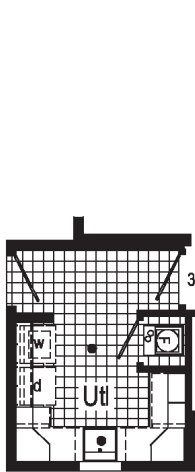
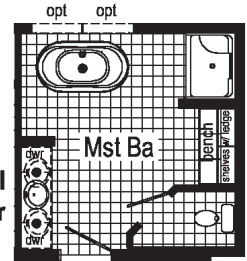


Kitchen with Soffit
Opt. Kitchen Drywall Soffit & Beams

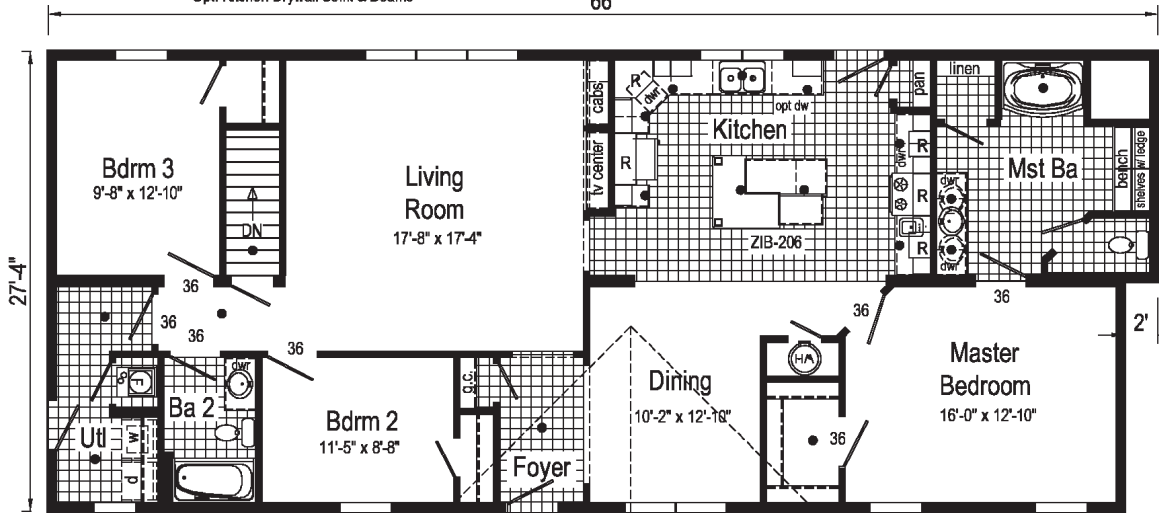


Optional 4'x6' Walk-In Tile Shower

Optional Glamour Bath



Optional Extended Utility Room



● = Std. can light R = Std. 30/36 staggered overhead



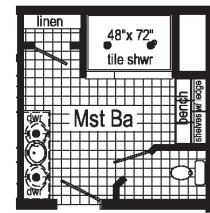
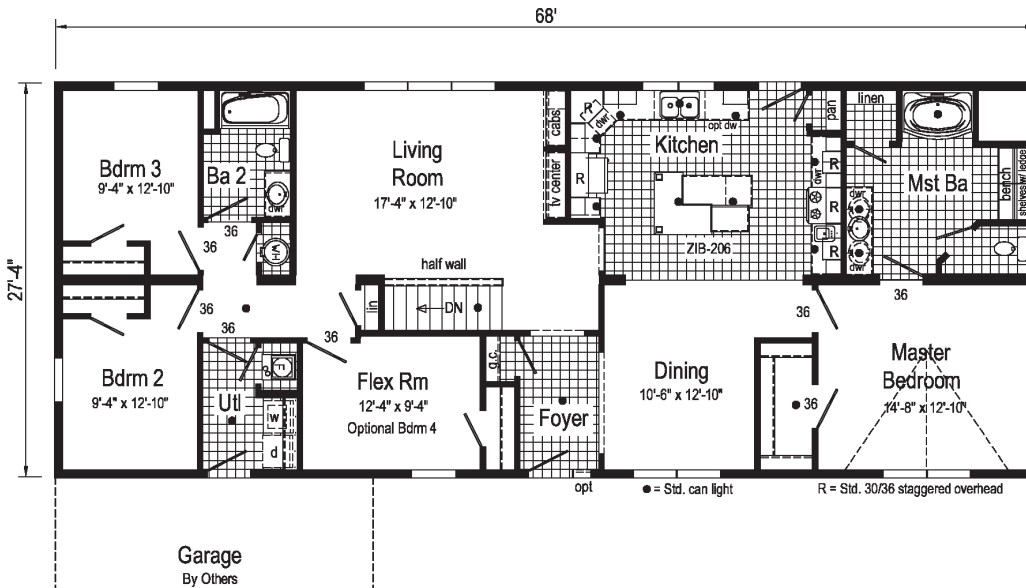
Opt. Box bay #38 Opt. 27'-4" dormer Opt. Box bay #38 Curb Side Exterior Options

Quattro

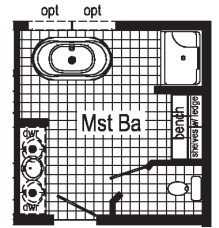
2P2022R

28x68 Approx. 1859 sq ft

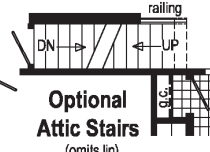
The Nextflex



Optional 4'x6' Walk-In Tile Shower

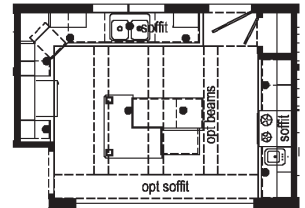


Optional Glamour Bath



Optional Attic Stairs

(omits lin)
Only available with 9/12 or 12/12 roof

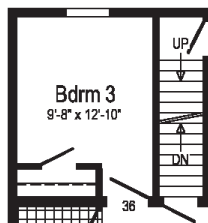


Kitchen with Soffit
Opt. Kitchen Drywall Soffit and Beams.

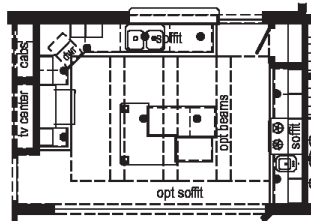
Entertainer

3P2006R

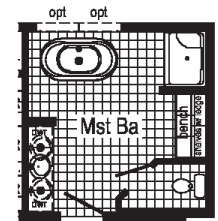
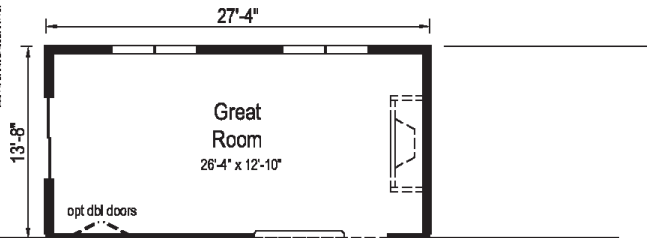
42x66/64 Approx. 2150 sq ft



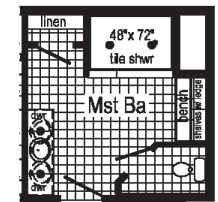
Optional Attic Stairs



Kitchen with Soffit
Opt. Kitchen Drywall Soffit & Beams



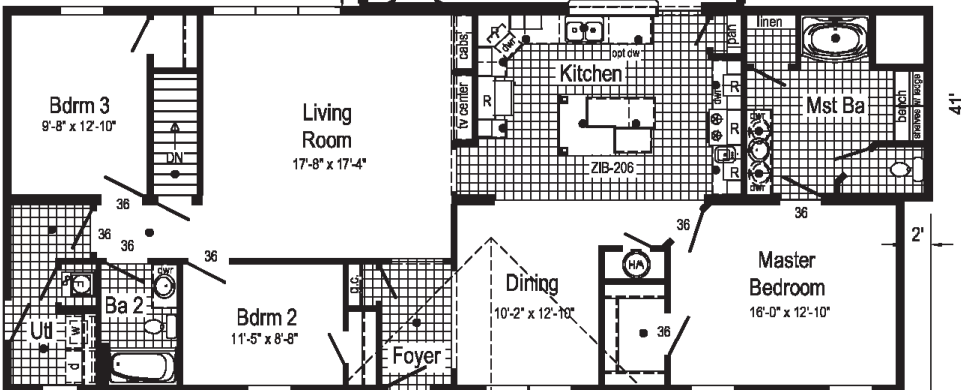
Optional Glamour Bath



Optional 4'x6' Walk-In Tile Shower



Optional Extended Utility Room

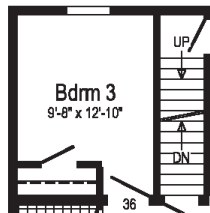


● = Std. can light R = Std. 30/36 staggered overhead

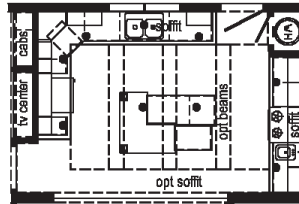


Curb Side Exterior Options

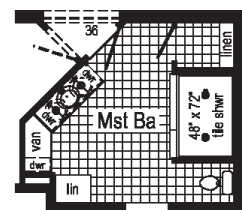
Family



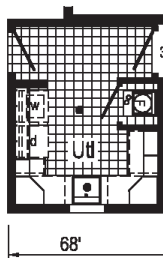
Optional Attic Stairs



Kitchen with Soffit
Opt. Kitchen Drywall Soffit & Beams



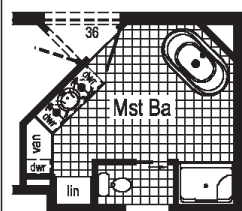
Optional 4'x6' Walk-In Tile Shower



Optional Extended Utility Room



● = Std. can light
R = Std. 30/36 staggered overhead



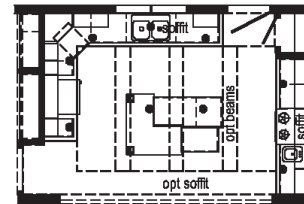
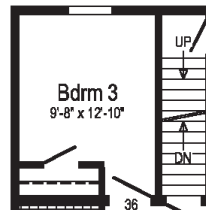
Optional Glamour Bath

Majestic Master

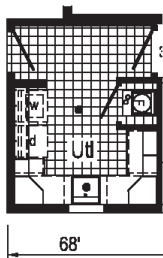
3P2004R

42x64 Approx. 2105 sq ft

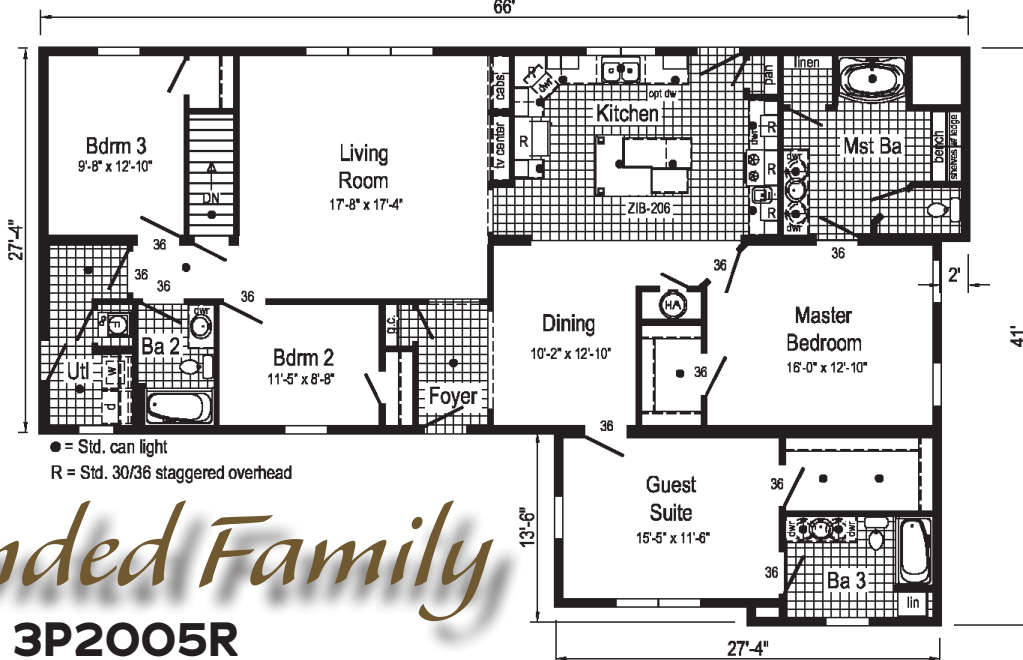
Optional Attic Stairs



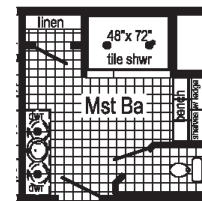
Kitchen with Soffit
Opt. Kitchen Drywall Soffit & Beams



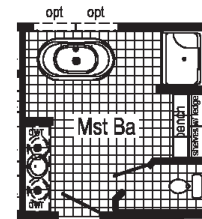
Optional Extended Utility Room



● = Std. can light
R = Std. 30/36 staggered overhead



Optional 4'x6' Walk-In Tile Shower



Optional Glamour Bath

Extended Family

3P2005R

42x66/64 Approx. 2132 sq ft

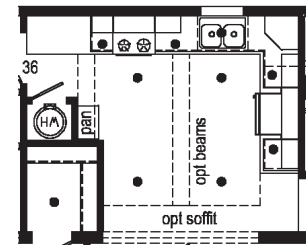
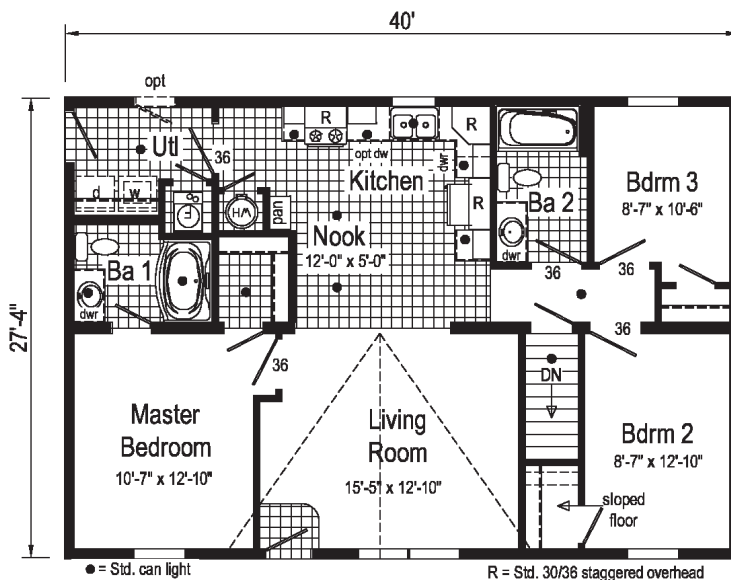
Silverwood



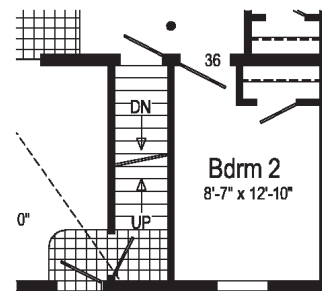
2P2001R

28x40 Approx. 1093 sq ft

Some features shown may be optional or added on-site by others.

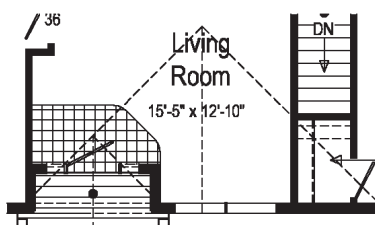


Kitchen with Soffit
Opt. Kitchen & Nook Drywall Soffit and Beams



Optional Attic Stairs
Moves front exterior door & living room windows.
Opt. Recessed Covered Entry with Columns not Available

Opt. Recessed Covered Entry with Columns
Moves living room windows.



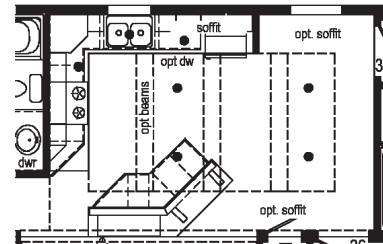
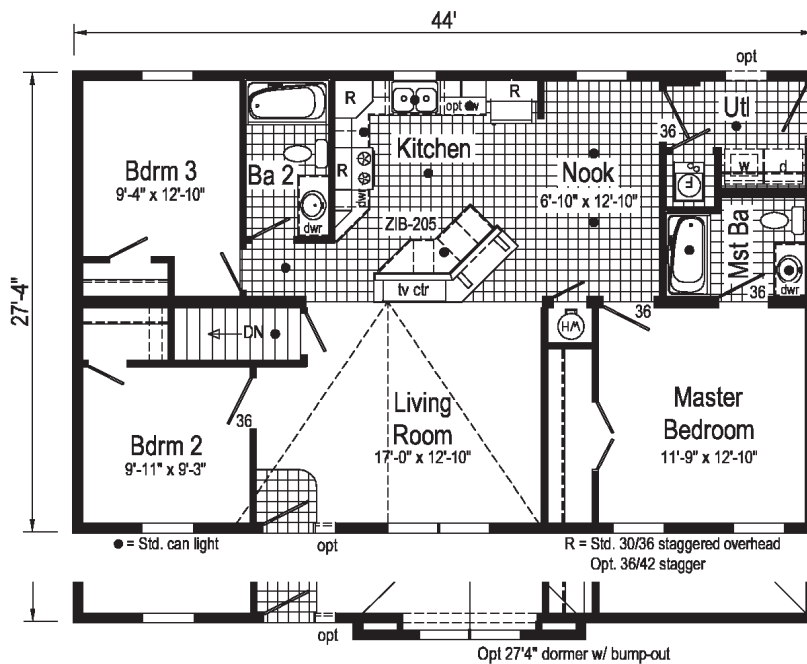
Berkshire



2P2002R

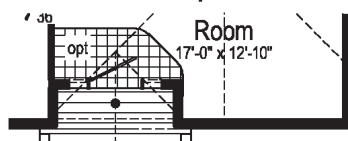
28x44 Approx. 1203 sq ft

Some features shown may be optional or added on-site by others.



Kitchen with Soffit
Opt Kitchen & Nook Drywall Soffit and Beams.

Curb Side Exterior Options



Opt. Recessed Covered Entry with Columns
Moves living room windows.

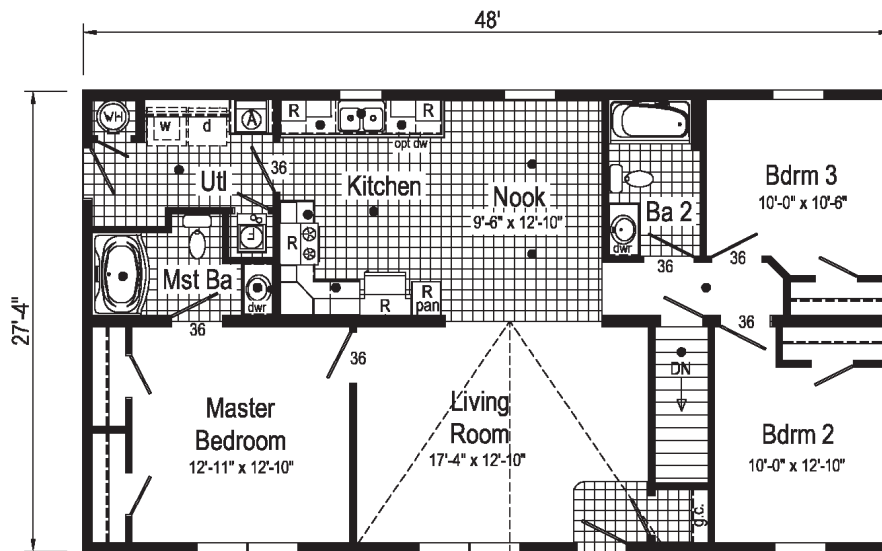
Firleigh



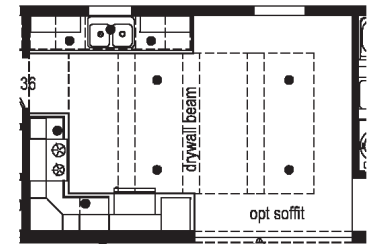
2P2003R

28x48 Approx. 1312 sq ft

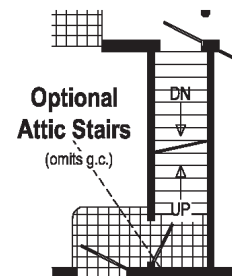
Some features shown may be optional or added on-site by others.



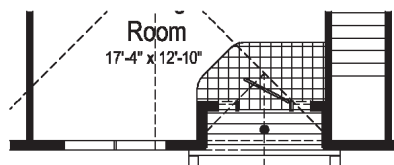
Ⓐ = Opt Util Sink or Bench ● = Std. can light R = Std. 30/36 staggered overhead
Opt. 36/42 stagger



Kitchen with Soffit
Opt. Kitchen & Nook Drywall Soffit and Beams



Optional Attic Stairs
(omits g.c.)



Opt. Recessed Covered Entry with Columns
(omits g.c.)



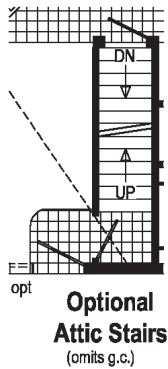
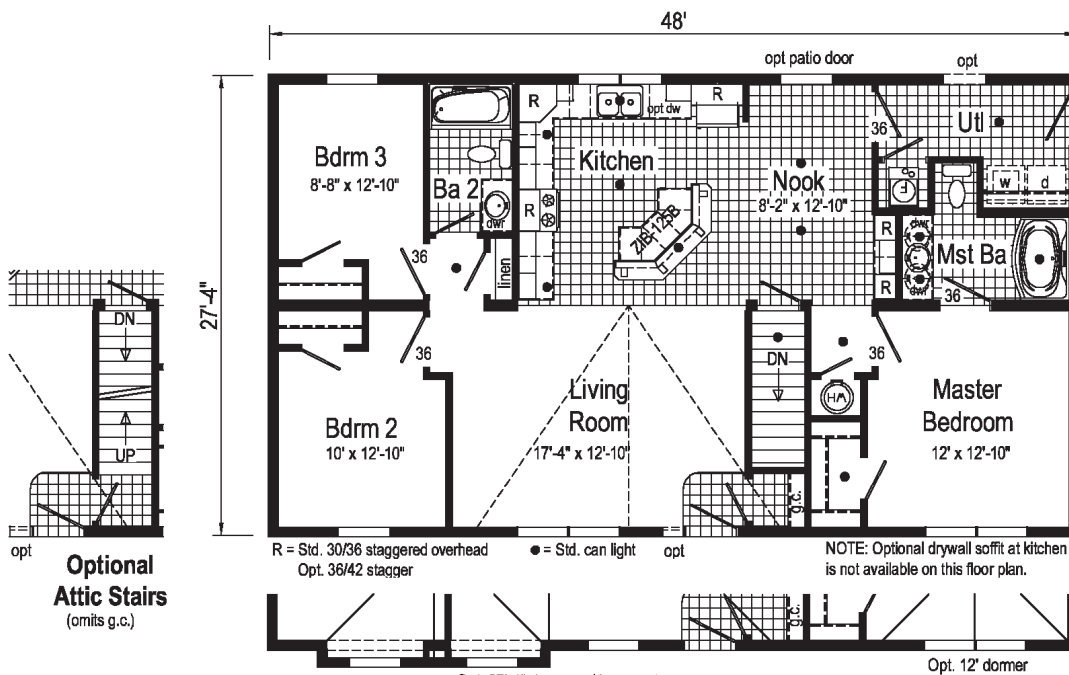
Easton



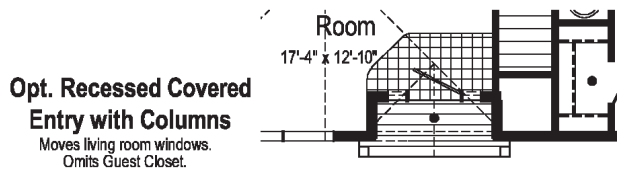
2P2004R

28x48 Approx. 1312 sq ft

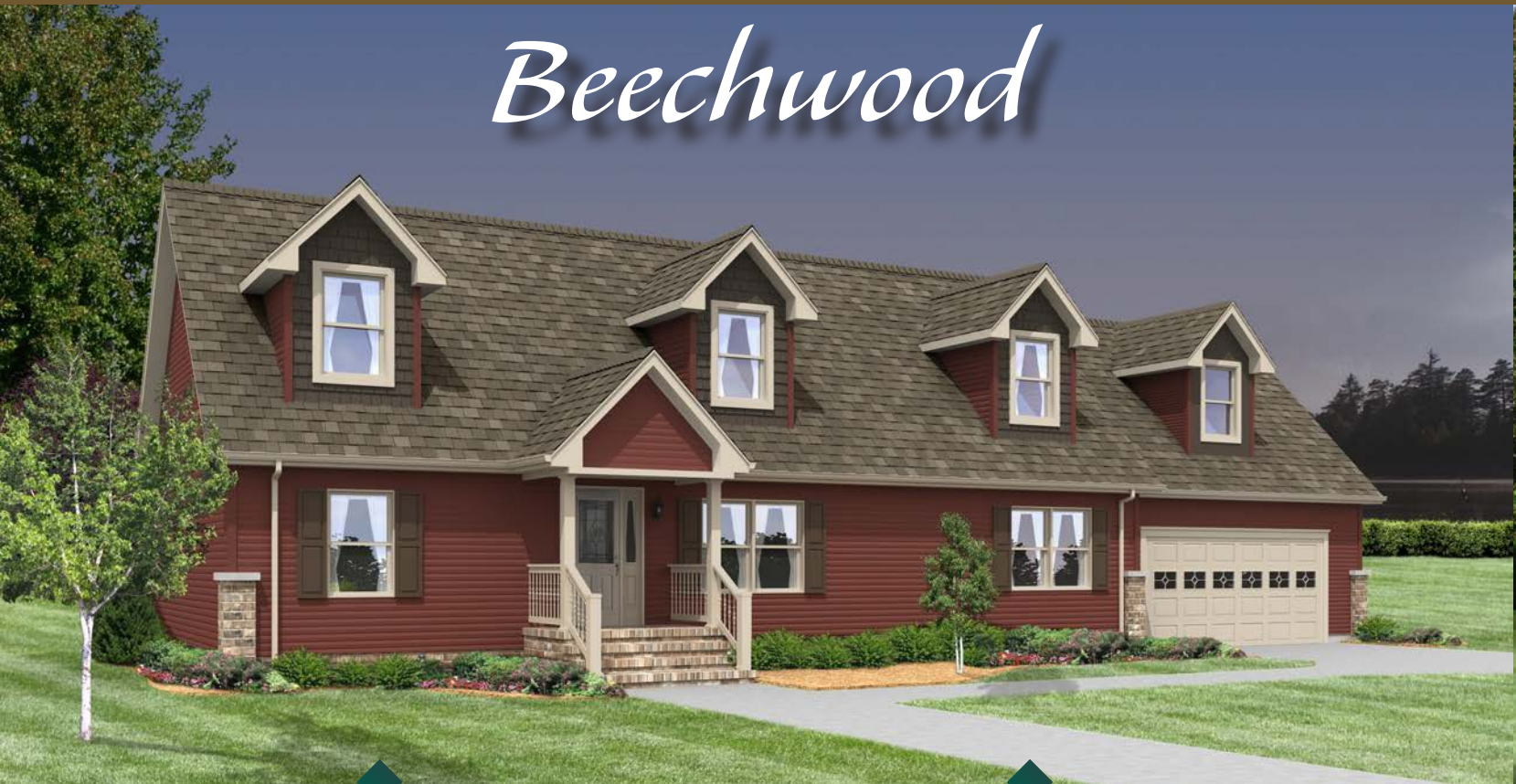
Some features shown may be optional or added on-site by others.



Curb Side Exterior Options



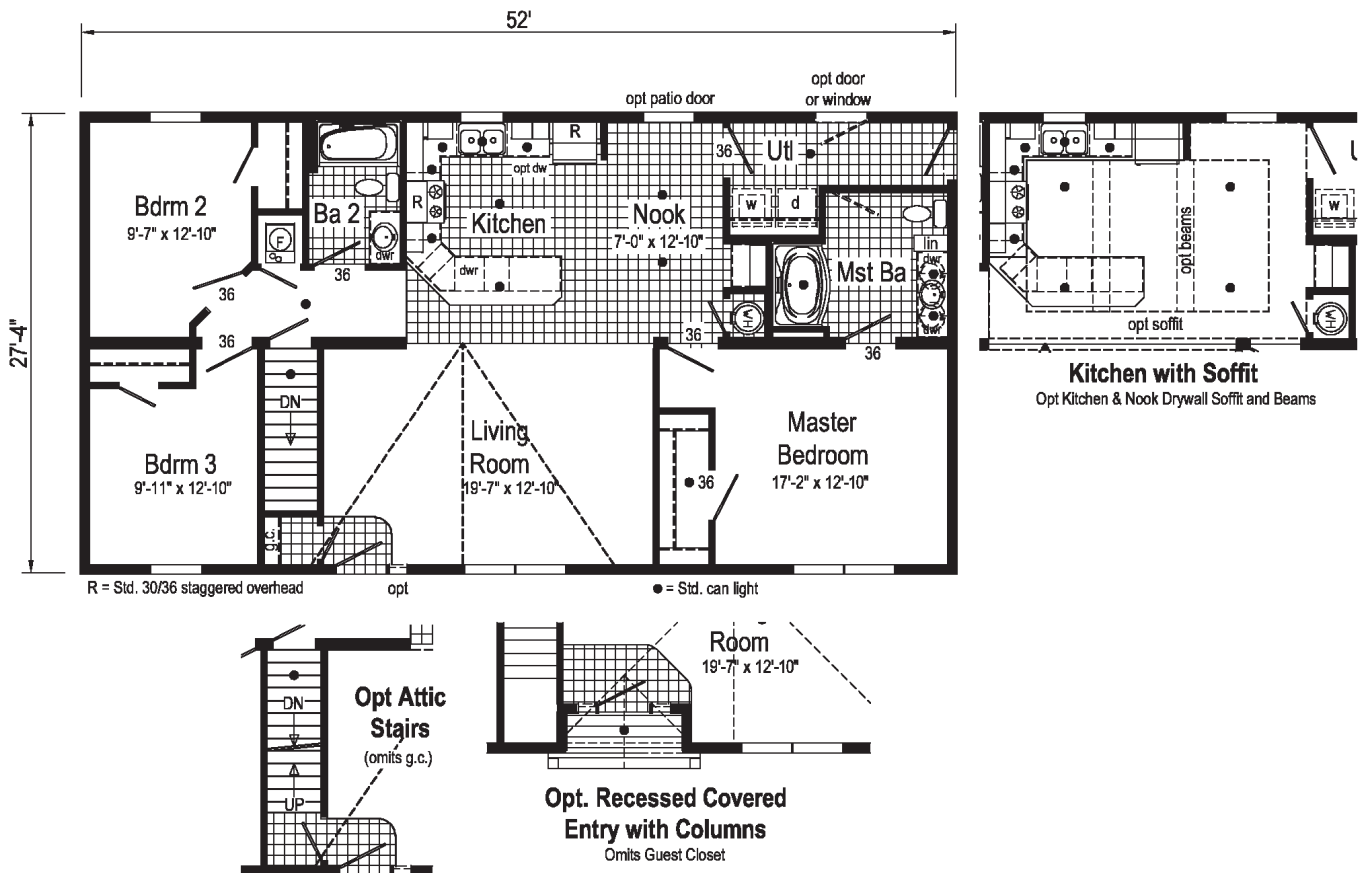
Beechwood



2P2005R

28x52 Approx. 1421 sq ft

Some features shown may be optional or added on-site by others.



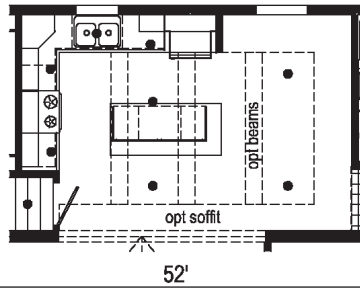
Saddlewood



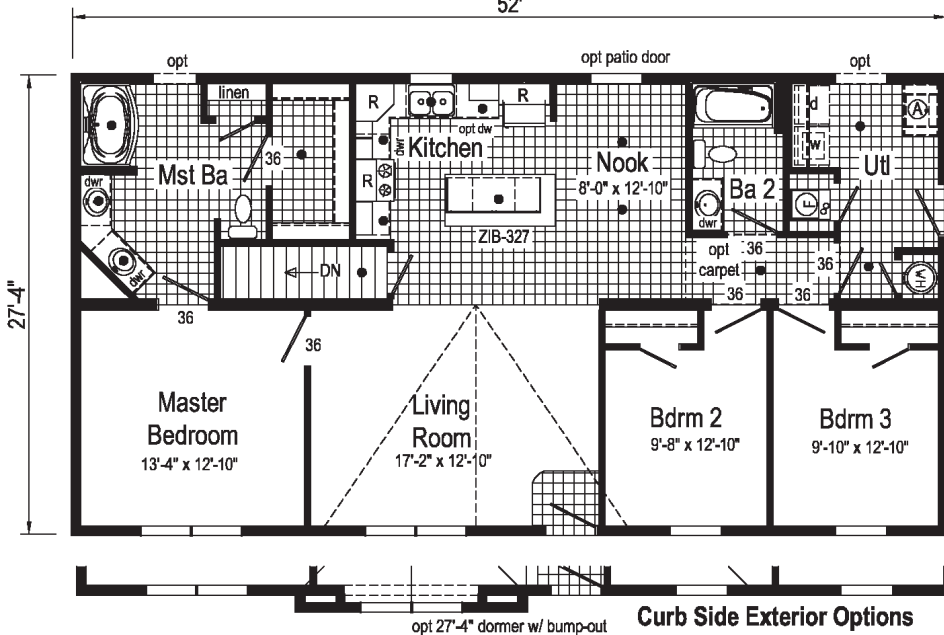
2P2006R

28x52 Approx. 1421 sq ft

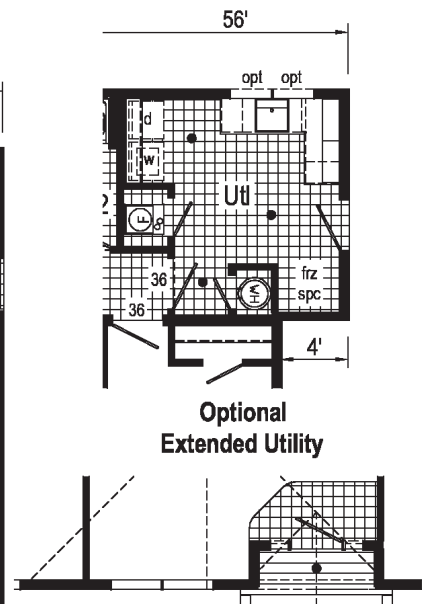
Some features shown may be optional or added on-site by others.



Kitchen with Soffit
Opt. Kitchen & Nook
Drywall Soffit and Beams.



Curb Side Exterior Options



Opt. Recessed Covered Entry with Columns
Moves living room windows.

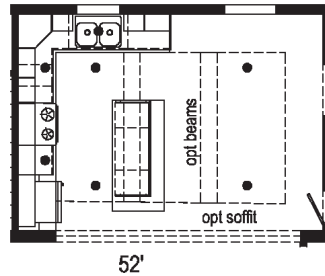
Mapleton



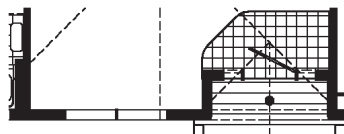
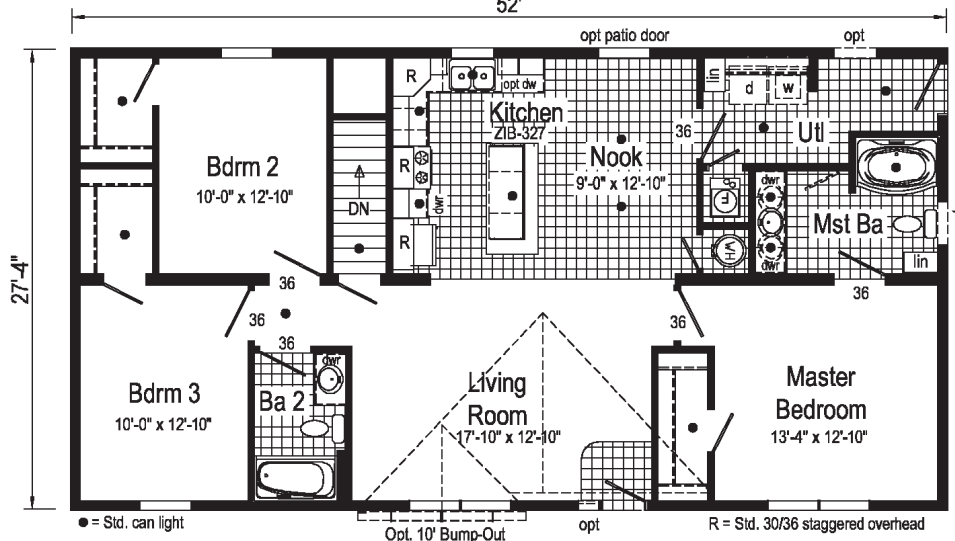
2P2007R

28x52 Approx. 1421 sq ft

Some features shown may be optional or added on-site by others.



Kitchen with Soffit
Opt. Kitchen and Nook Drywall Soffit and Beams



Opt. Recessed Covered Entry with Columns
Moves living room windows.



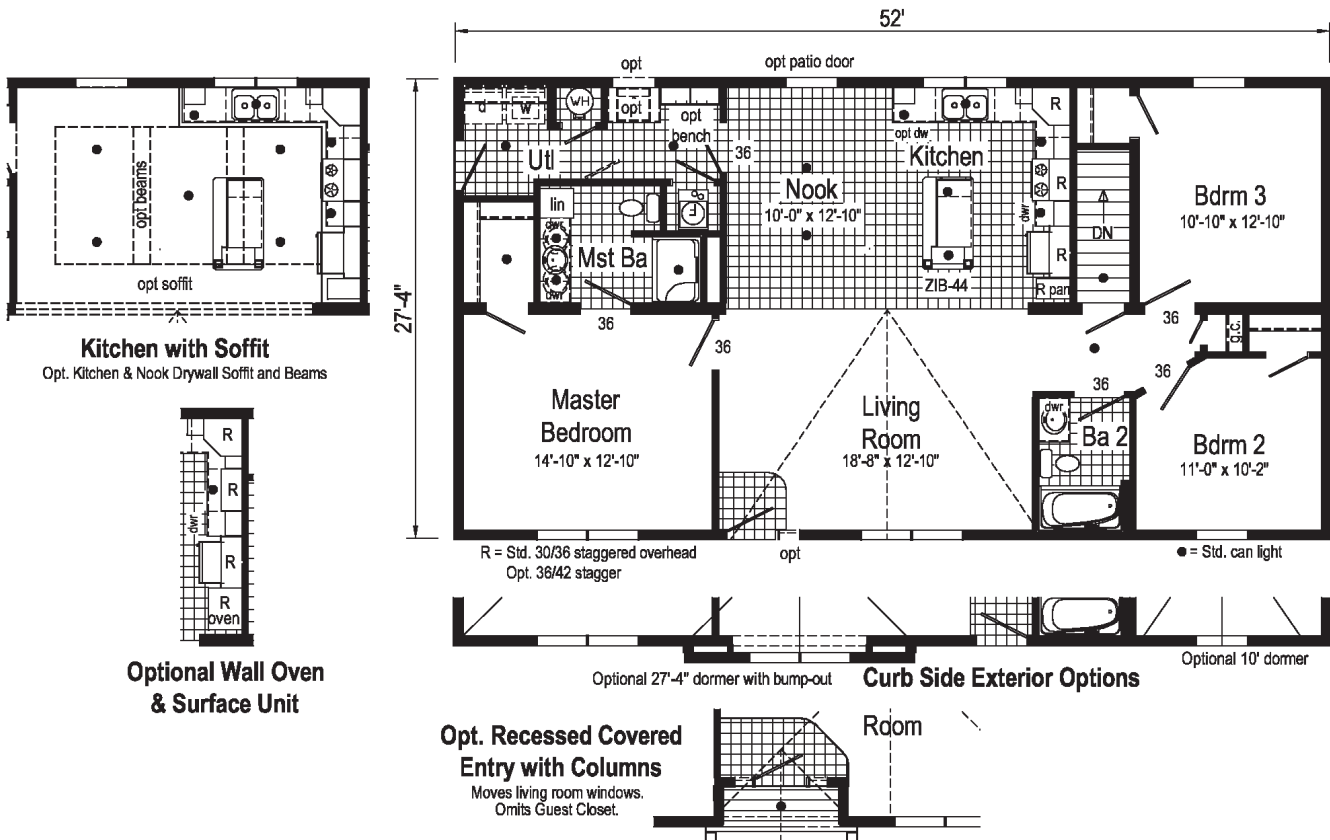
Kingston



2P2008R

28x52 Approx. 1421 sq ft

Some features shown may be optional or added on-site by others.



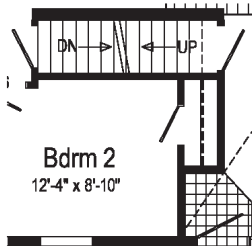
Woodbury



2P2009R

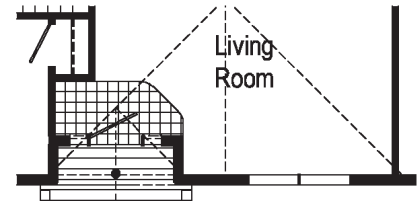
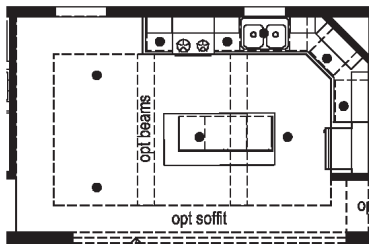
28x56 Approx. 1531 sq ft

Some features shown may be optional or added on-site by others.

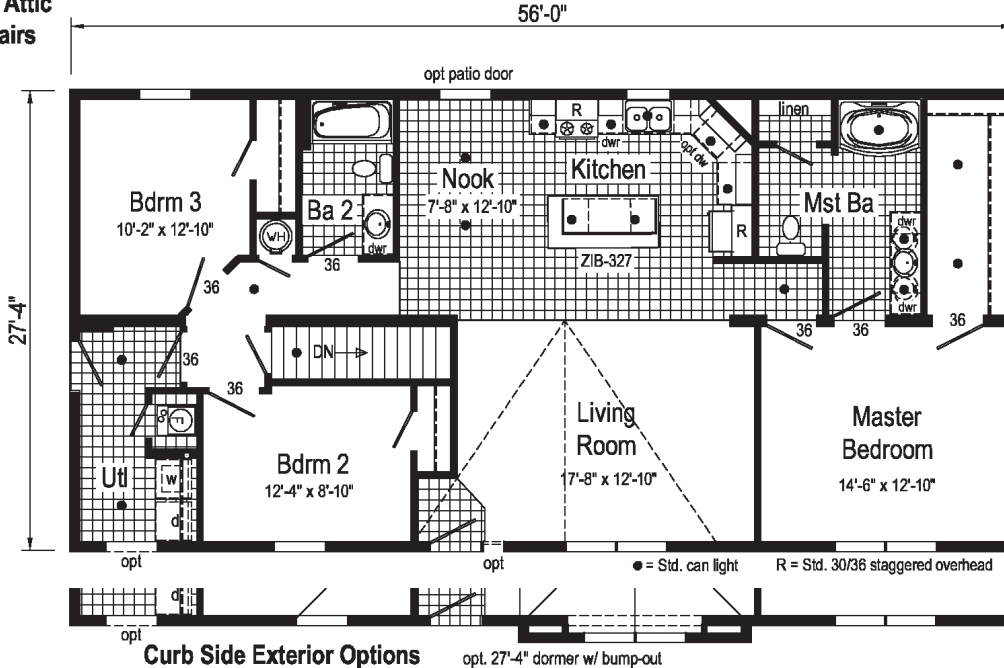


Opt Attic Stairs

Kitchen with Soffit
Opt. Kitchen & Nook Drywall Soffit and Beams

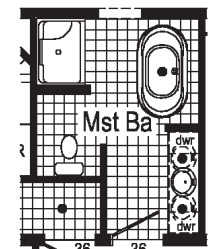


Opt. Recessed Covered Entry with Columns

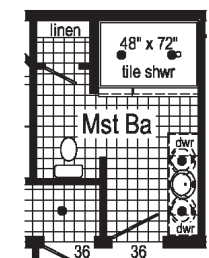


Curb Side Exterior Options

opt. 27'-4" dormer w/ bump-out



Optional Glamour Bath
(omits linen)



Optional 4'x6' Walk-In Tile Shower



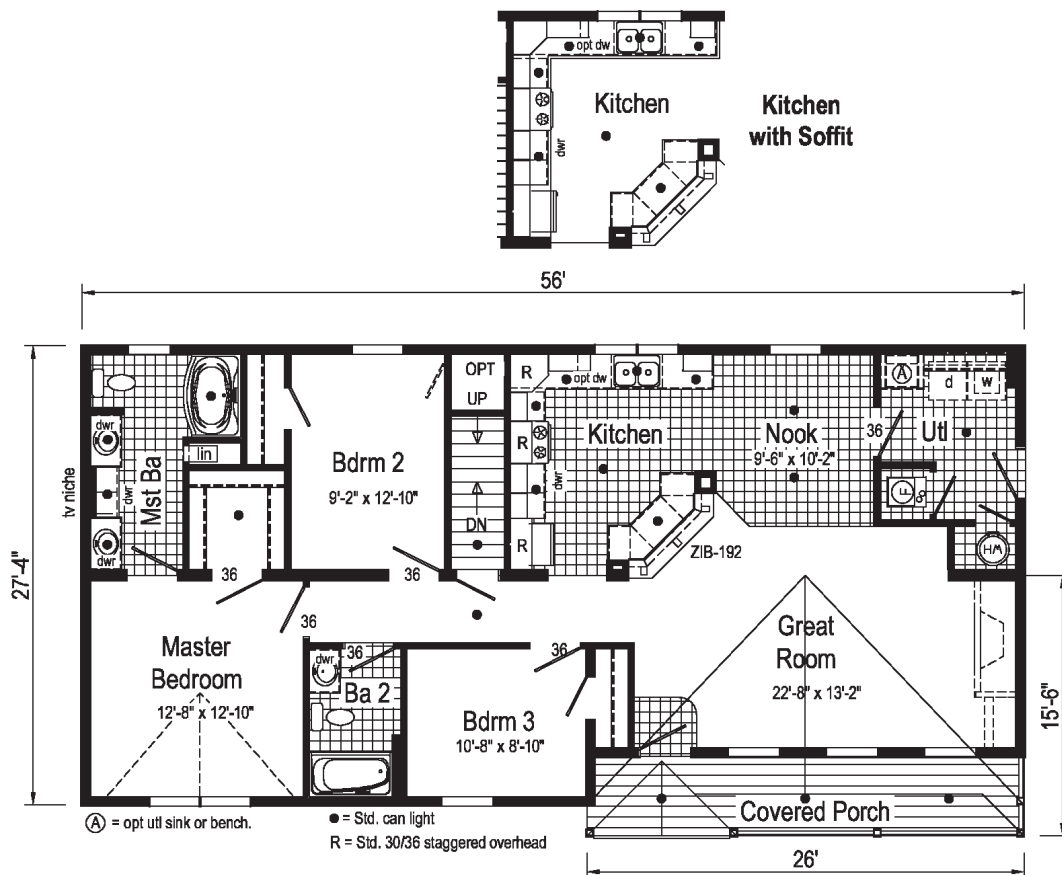
Rosemont



2P2010R

28x56 Approx. 1456 sq ft

Some features shown may be optional or added on-site by others.



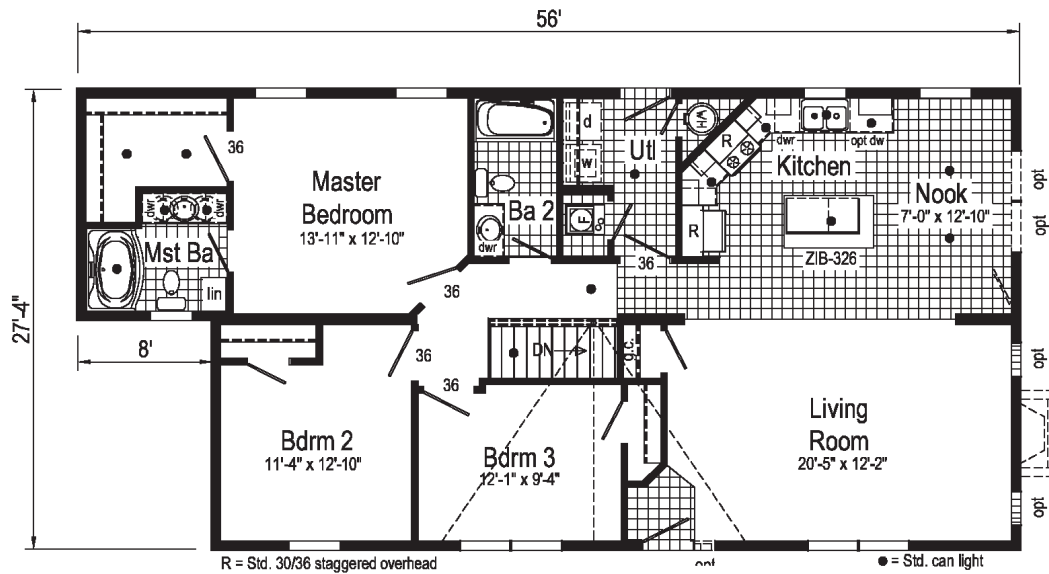
Ashton



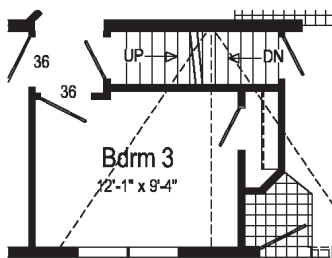
2P2011R

28x56/48 Approx. 1421 sq ft

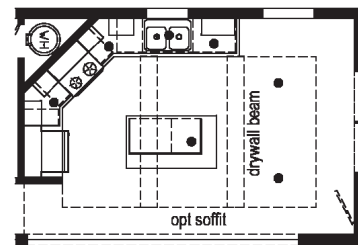
Some features shown may be optional or added on-site by others.



Opt Attic Stairs
(omits g.c.)
Only Available
w/ 8' ceiling ht.



Opt. Recessed Covered Entry with Columns



Kitchen with Soffit
Opt. Kitchen & Nook Drywall Soffit and Beams

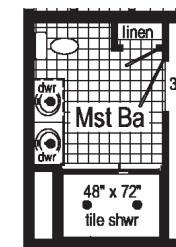
Willowbee



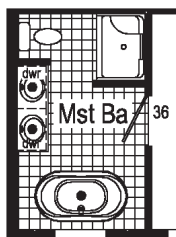
2P2012R

28x60 Approx. 1640 sq ft

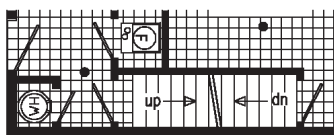
Some features shown may be optional or added on-site by others.



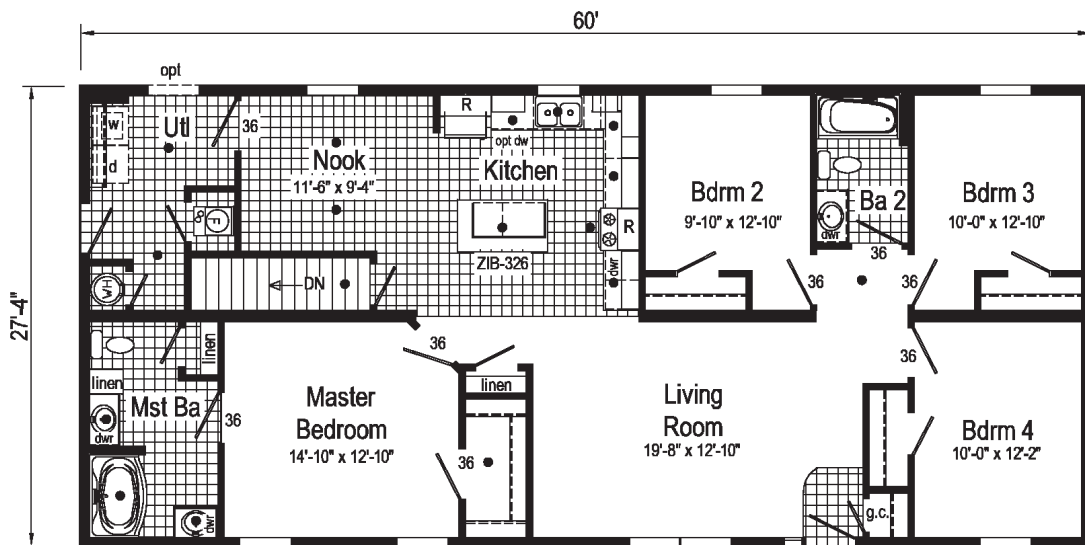
**Optional
4'x6' Walk-In
Tile Shower**



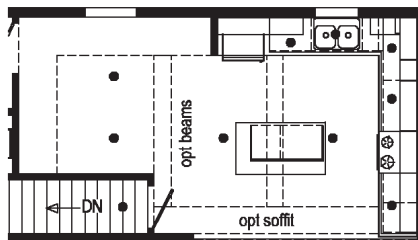
**Optional
Glamour
Bath**
(omits linen)



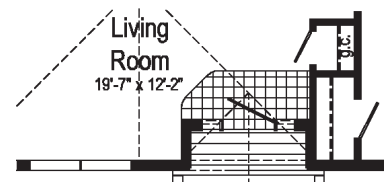
Opt Attic Stairs



● = Std. can light R = Std. 30/36 staggered overhead



Kitchen with Soffit
Opt. Kitchen & Nook Drywall Soffit and Beams



**Opt. Recessed Covered
Entry with Columns**

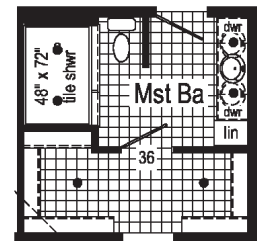
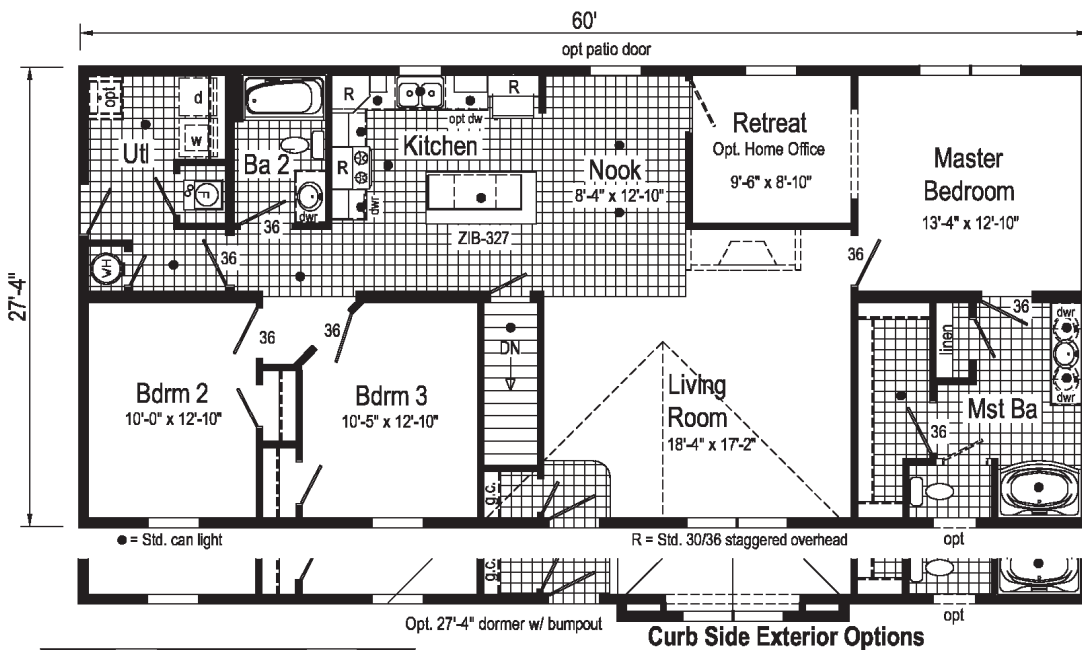
Elderberry



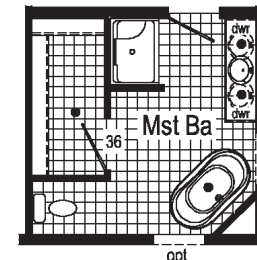
2P2014R

28x60 Approx. 1560 sq ft

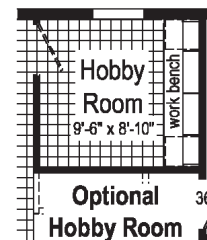
Some features shown may be optional or added on-site by others.



Optional
4'x6' Walk-In
Tile Shower

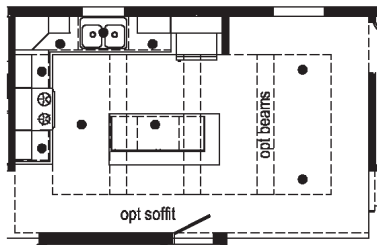


Optional Glamour Bath
(omits linen)

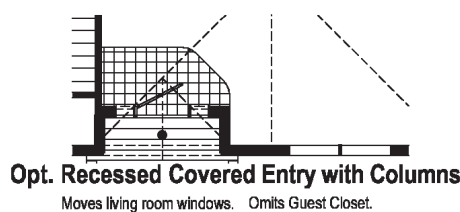


Optional
Hobby Room
(replaces retreat)

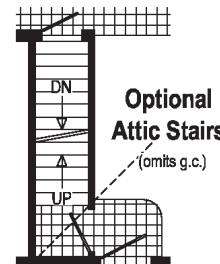
Curb Side Exterior Options



Kitchen with Soffit
Opt. Kitchen & Nook Drywall Soffit & Beams



Opt. Recessed Covered Entry with Columns
Moves living room windows. Omits Guest Closet.

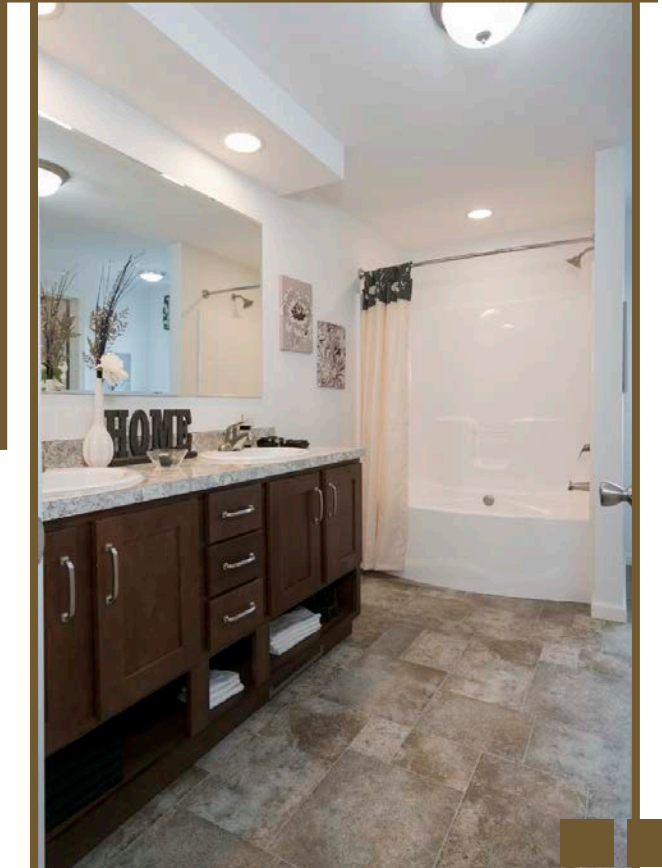
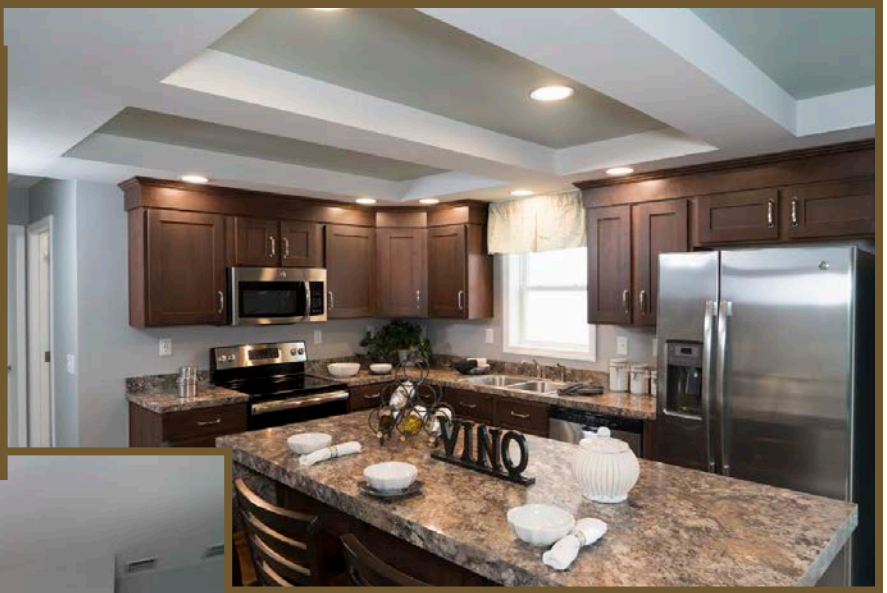
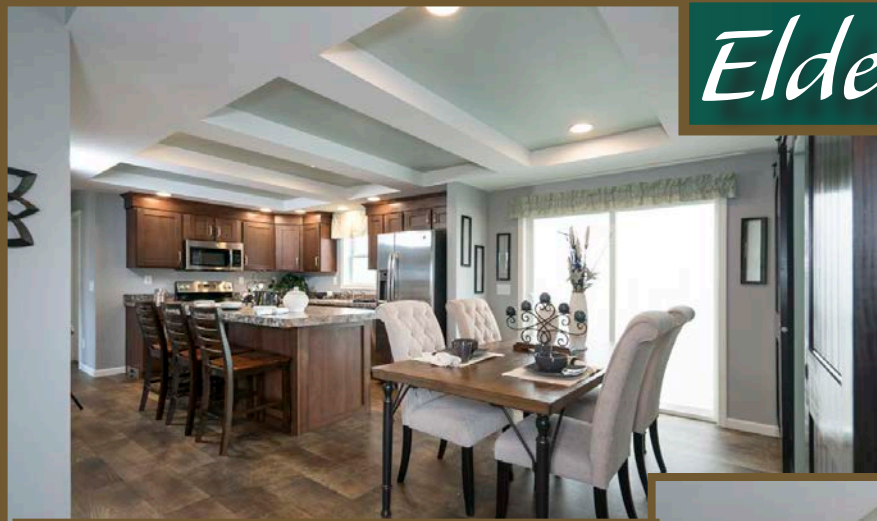


Optional
Attic Stairs
(omits g.c.)

Elderberry Photos

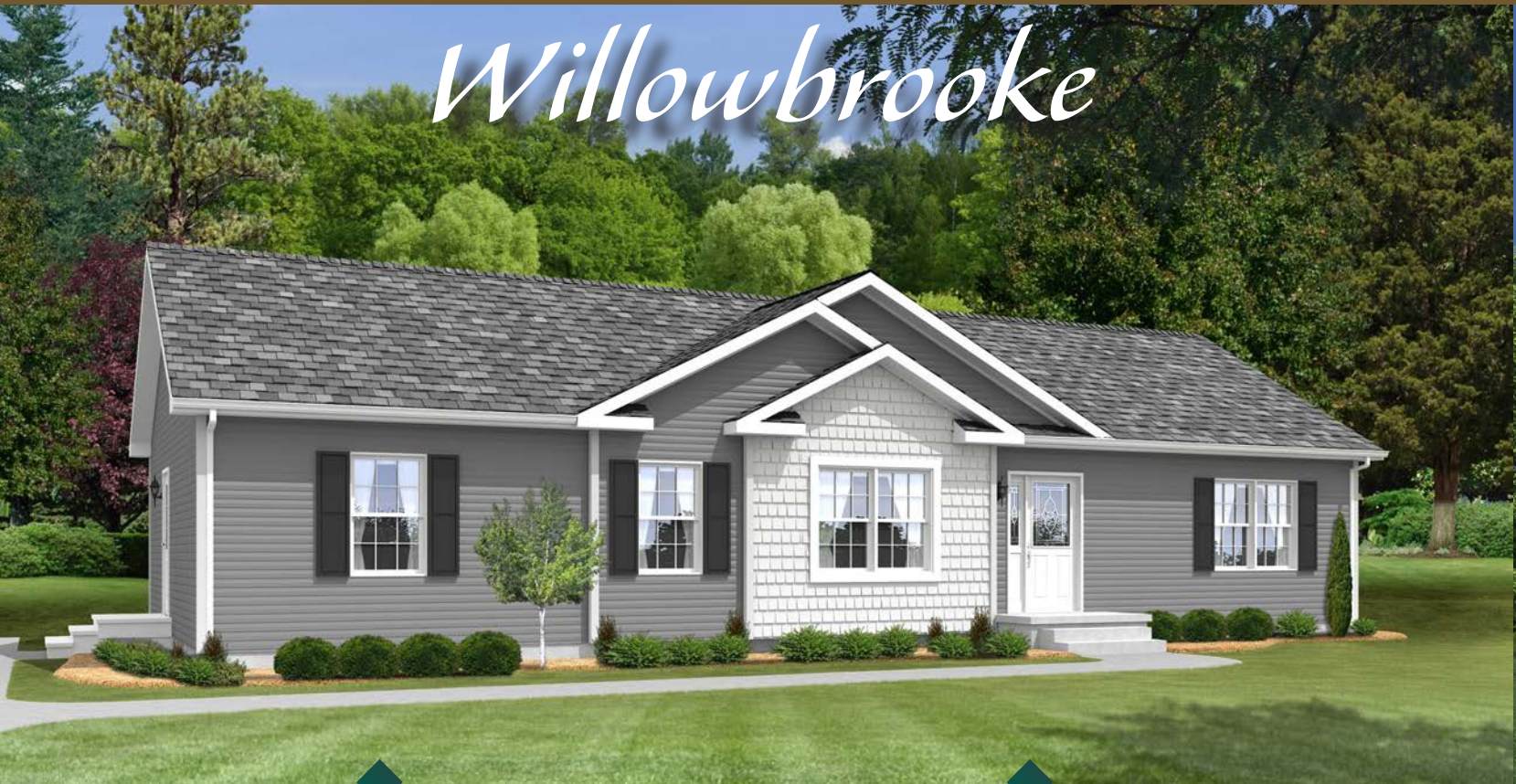


Scan to Watch Video!



Reserve

Willowbrooke



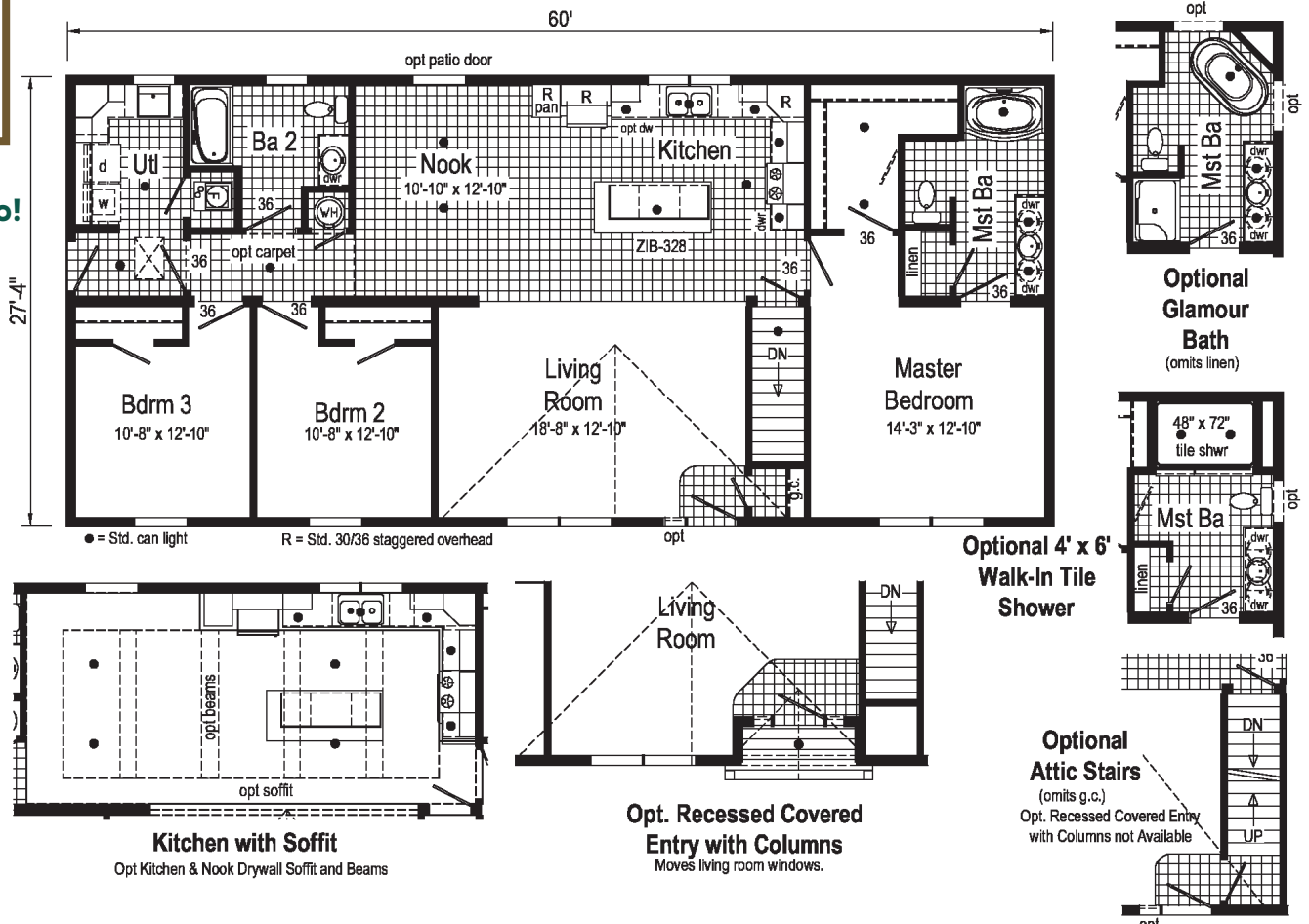
2P2013R

28x60 Approx. 1640 sq ft

Some features shown may be optional or added on-site by others.



Scan to Watch Video!



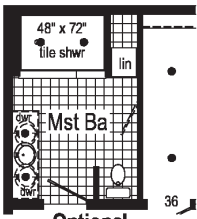
Danbury



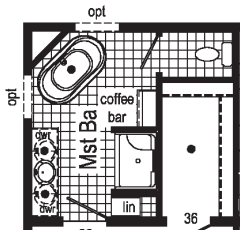
2P2016R

28x60 Approx. 1647 sq ft

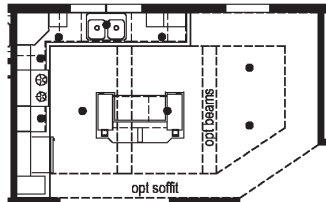
Some features shown may be optional or added on-site by others.



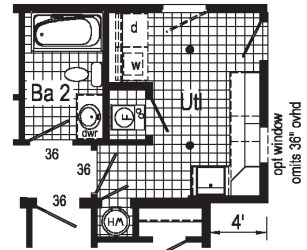
Optional 4'x6' Walk-In Tile Shower
(omits coffee bar)



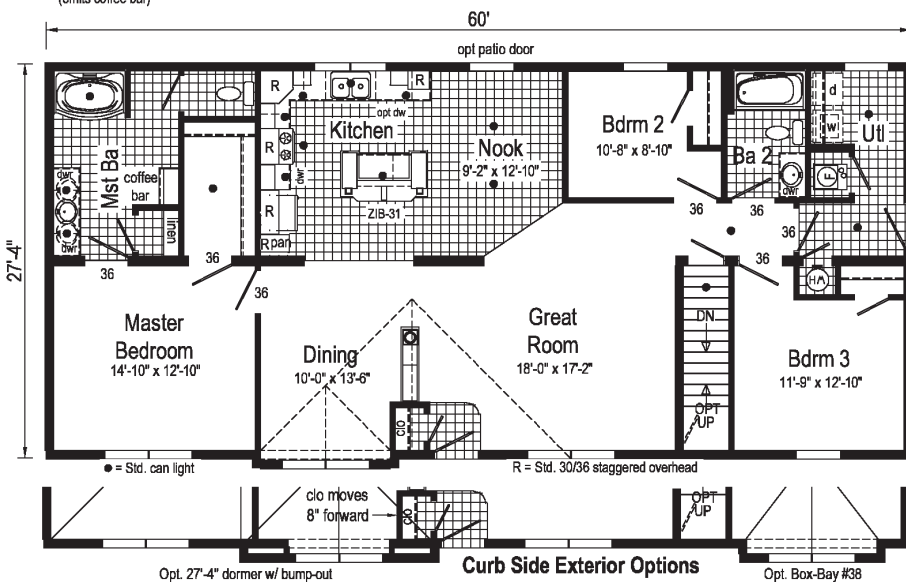
Optional Glamour Bath



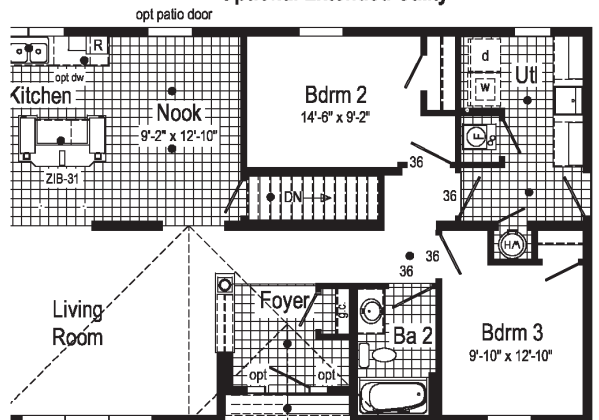
Kitchen with Soffit
Opt. Kitchen & Nook
Drywall Soffit and Beams



Optional Extended Utility



Curb Side Exterior Options



Optional Larger Utility with Cabinets & Recessed Entry Foyer
Omits Dining & Relocates Stairwell & Bath 2



Optional Recessed Entry Foyer
Rep. Dining

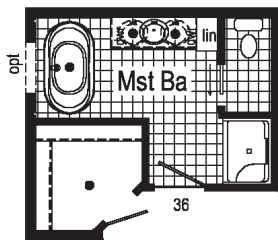
Charlestown



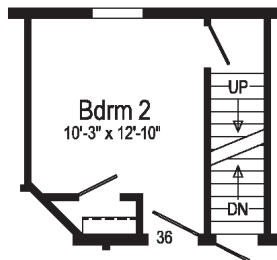
2P2017R

28x60/52 Approx. 1464 sq ft

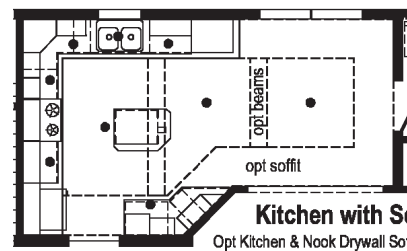
Some features shown may be optional or added on-site by others.



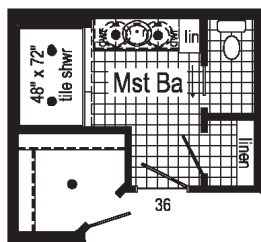
Optional Glamour Bath



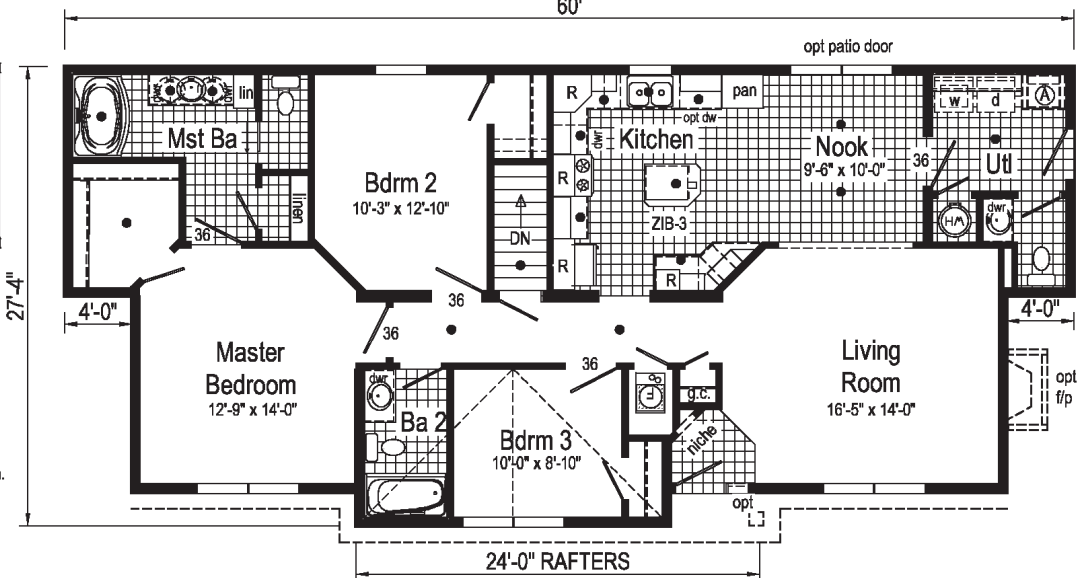
Opt Attic Stairs



Kitchen with Soffit
Opt Kitchen & Nook Drywall Soffit and Beams



Optional 4'x6' Walk-In Tile Shower



- = Std. can light
- Ⓐ = Std frz spc, opt utl sink or bench.
- R = Std. 30/36 staggered overhead

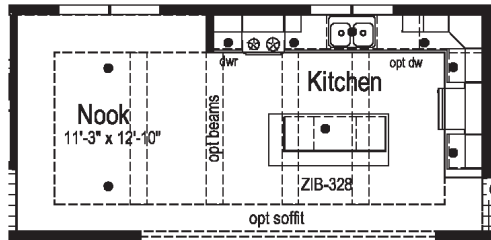
Hebron



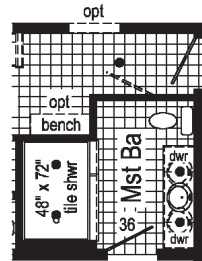
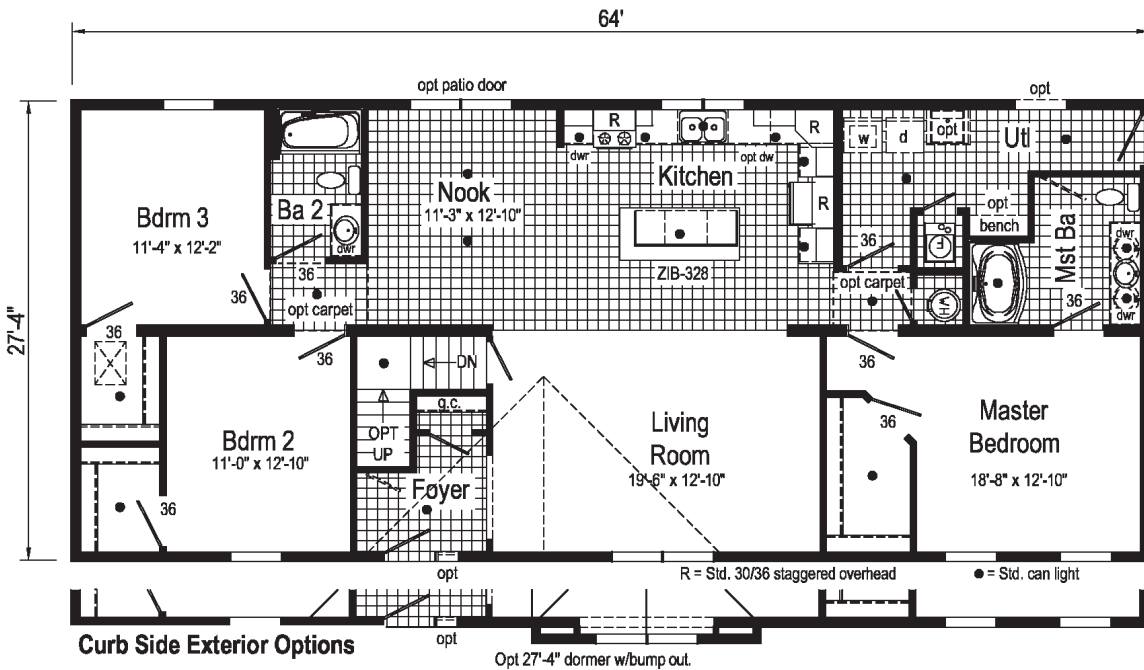
2P2018R

28x64 Approx. 1749 sq ft

Some features shown may be optional or added on-site by others.



Kitchen with Soffit
Opt. Kitchen & Nook Drywall Soffit and Beams



Optional 4'x6' Walk-In Tile Shower

Curb Side Exterior Options

Opt 27'-4\"/>

Washington



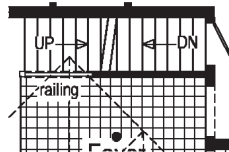
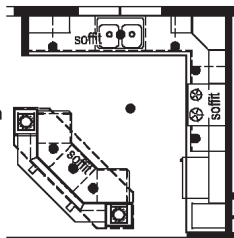
2P2019R

28x64/60 Approx. 1676 sq ft

Some features shown may be optional or added on-site by others.

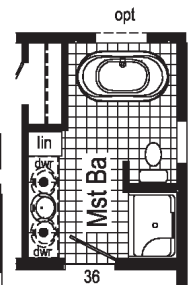
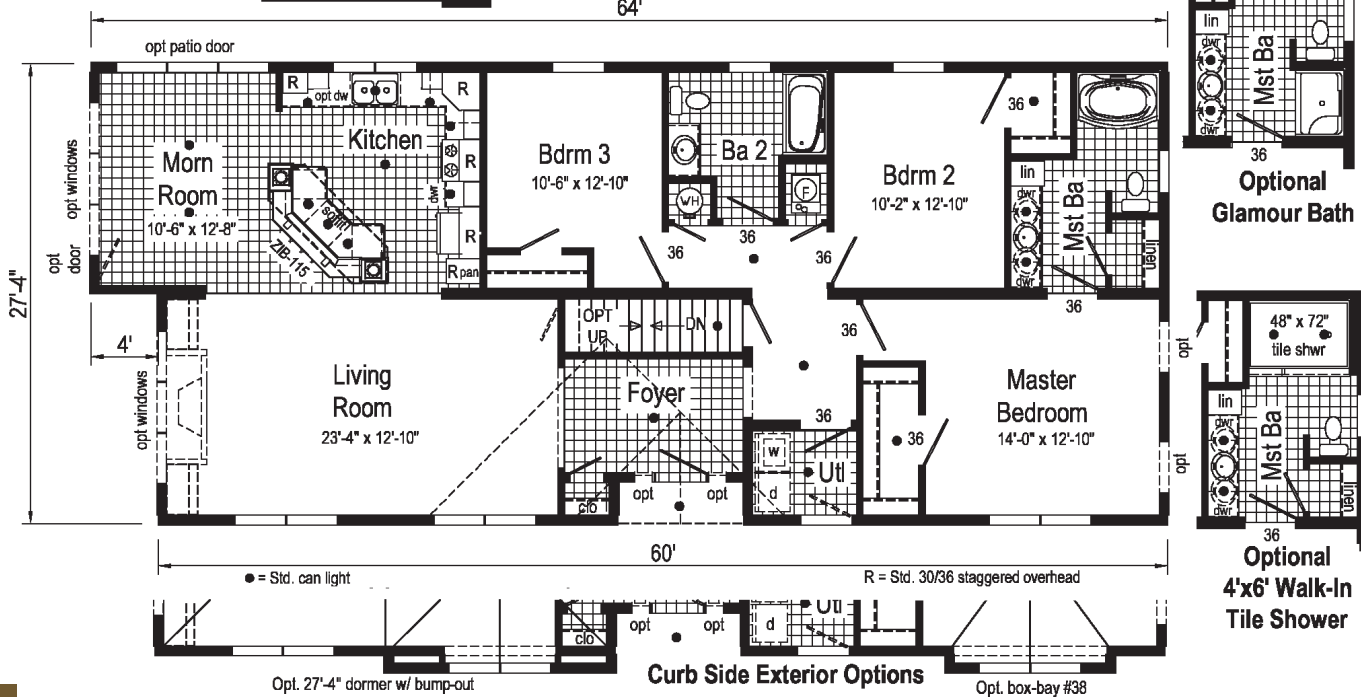
Kitchen with Soffit

Opt. Morning Room Soffit and Beams Not Available.

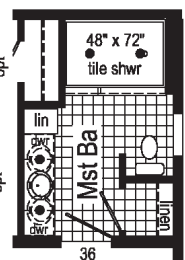


Opt. Open Attic Stairs

Only available with opt 12/12 pitch roof



Optional Glamour Bath



Optional 4'x6' Walk-In Tile Shower

Opt. 27'-4" dormer w/ bump-out

Curb Side Exterior Options

Opt. box-bay #38

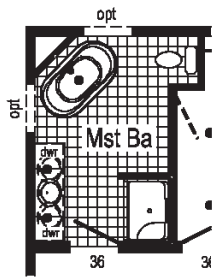
Bismarck



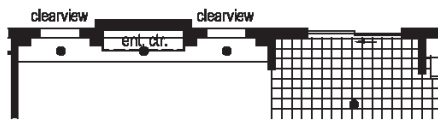
2P2021R

28x68 Approx. 1768 sq ft

Some features shown may be optional or added on-site by others.

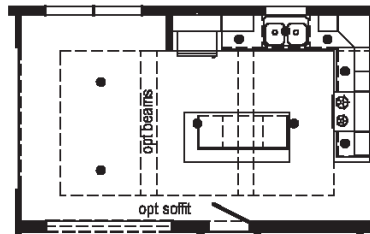


Optional Glamour Bath
(omits linen)



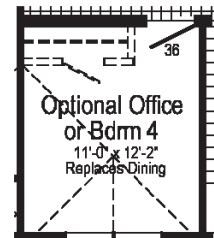
Optional Clearview Entertainment Wall

This option requires Optional Patio Door at Nook

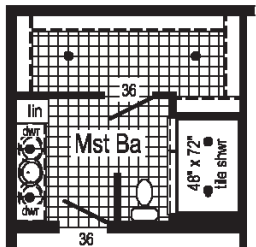


Kitchen with Soffit

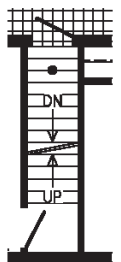
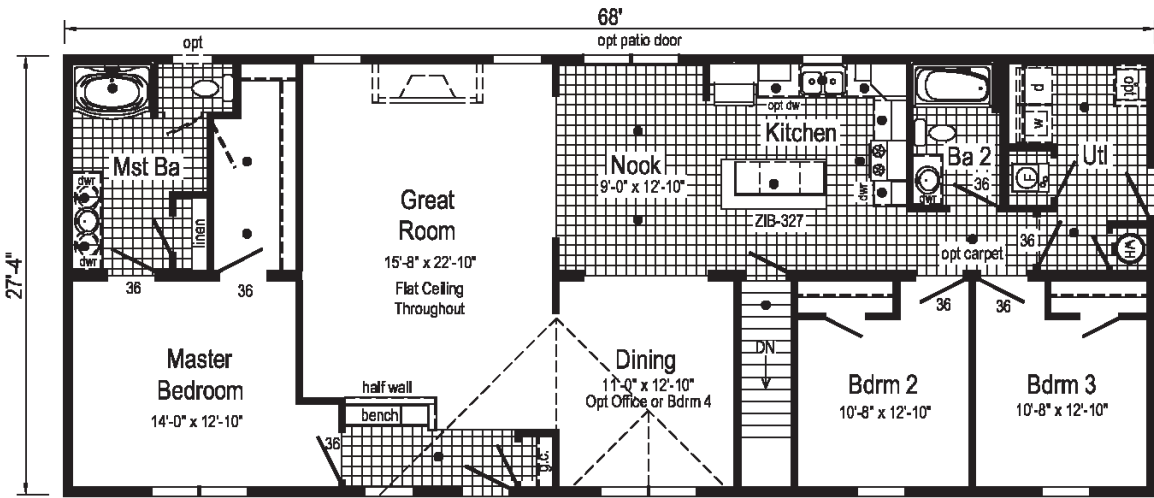
Opt. Kitchen & Nook Soffit and Beams



Optional Office or Bdrm 4
11'-0" x 12'-2"
Replaces Dining



Optional 4'x6' Walk-In Tile Shower



Opt Attic Stairs

Curb Side Exterior Options

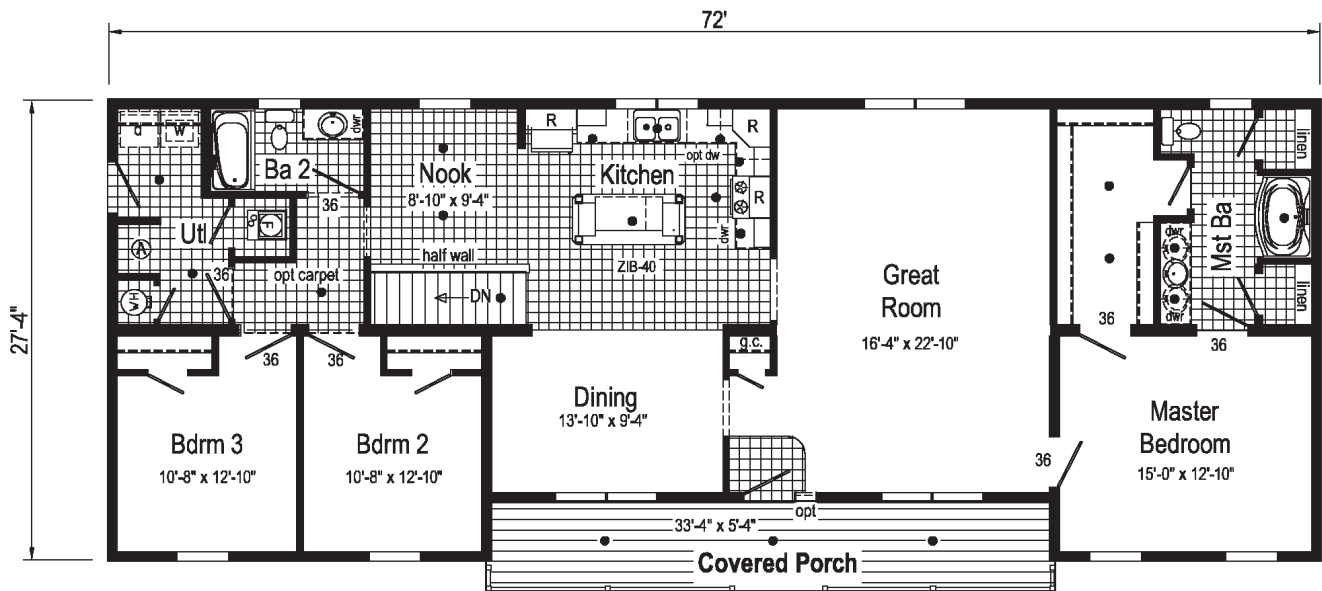
Carthage



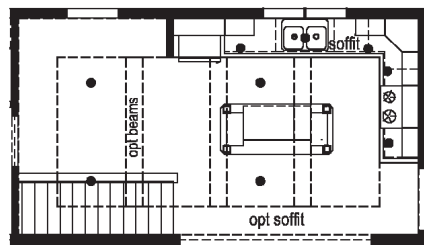
2P2023R

28x72 Approx. 1852 sq ft

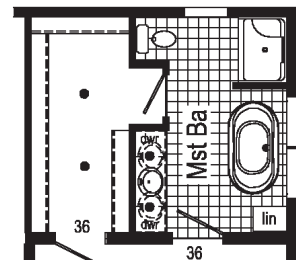
Some features shown may be optional or added on-site by others.



Optional Attic Stair

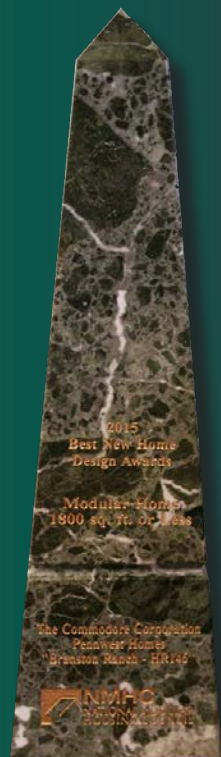


Kitchen with Soffit
Opt Kitchen & Nook
Drywall Soffit and Beams.



Optional Glamour Bath

Branston

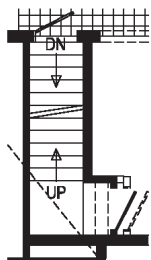
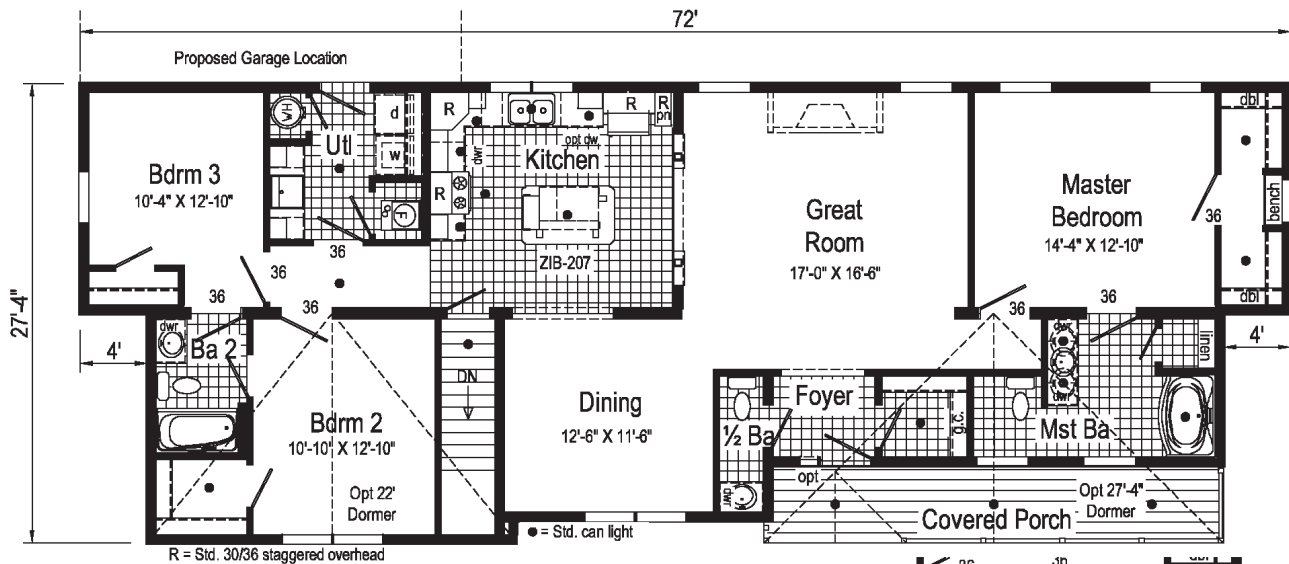


2015 MHI Best New Home Design Award for
Modular Homes 1800 Sq. Ft. or Less

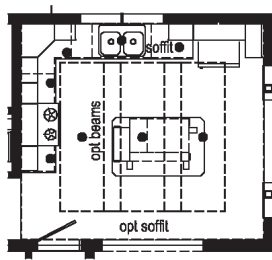
2P2024R

28x72/64 Approx. 1704 sq ft

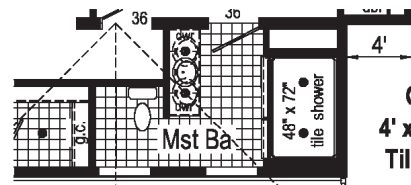
Some features shown may be optional or added on-site by others.



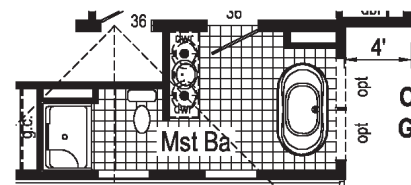
Optional Attic Stairs



Kitchen with Soffit
Opt Full Perimeter Drywall Soffit and Beams



Optional 4' x 6' Walk-In Tile Shower



Optional Glamour Bath



Scan to Watch Video!

Reserve

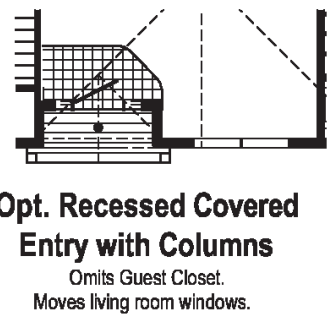
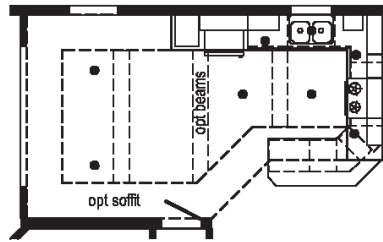
Vienna



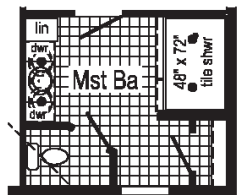
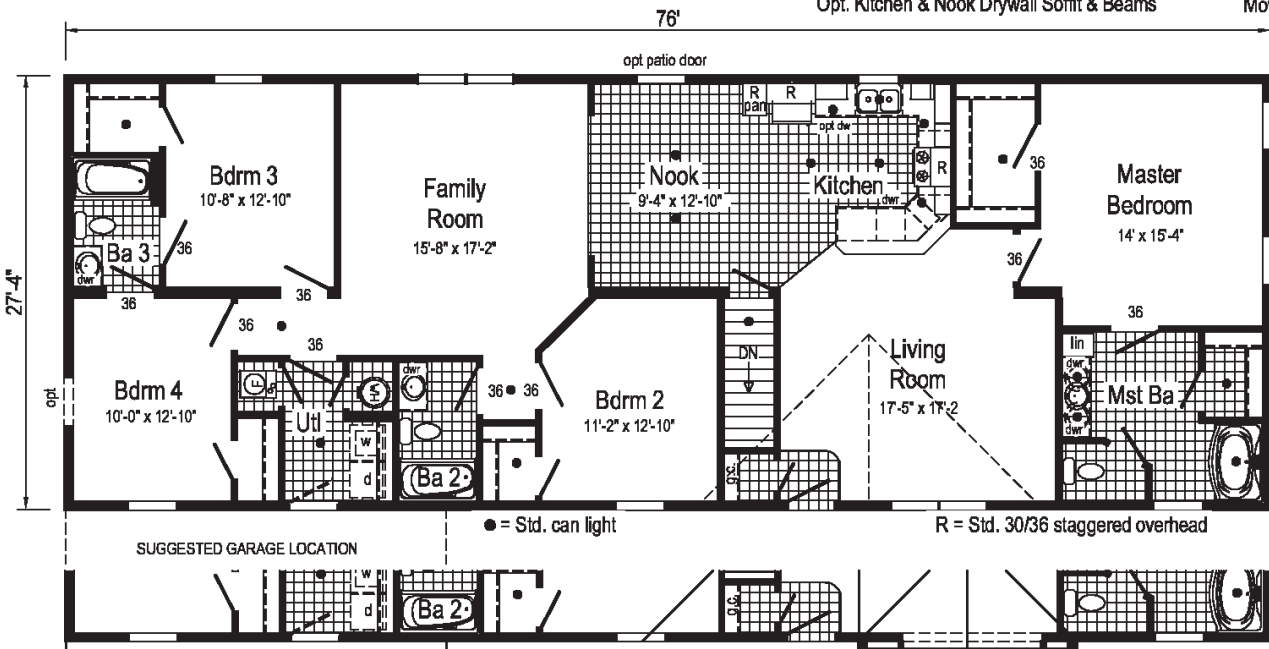
2P2025R

28x76 Approx. 2077 sq ft

Some features shown may be optional or added on-site by others.



Opt. Kitchen & Nook Drywall Soffit & Beams



Curb Side Exterior Options

Birchton

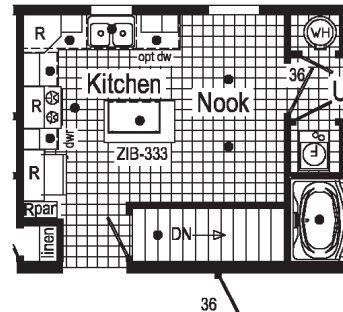
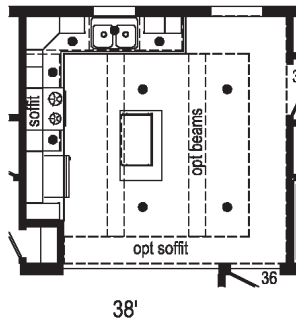


2P2026X

32x38 Approx. 1178 sq ft

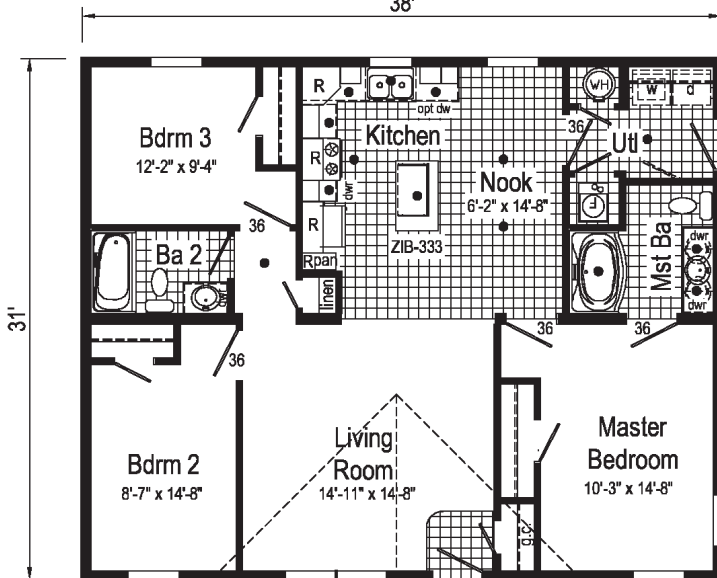
Some features shown may be optional or added on-site by others.

Kitchen with Soffit
Opt Kitchen & Nook
Drywall Soffit and Beams



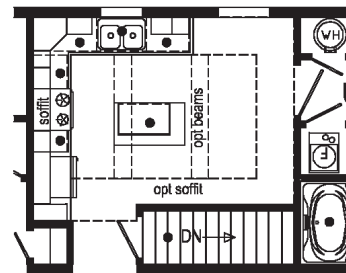
Optional Stairwell

(rotates opt island)
Optional Attic Stairs Not Available



● = Std. can light

R = Std. 30/36 staggered overhead



Stairwell / Kitchen with Soffit

Opt Kitchen & Nook
Drywall Soffit and Beams

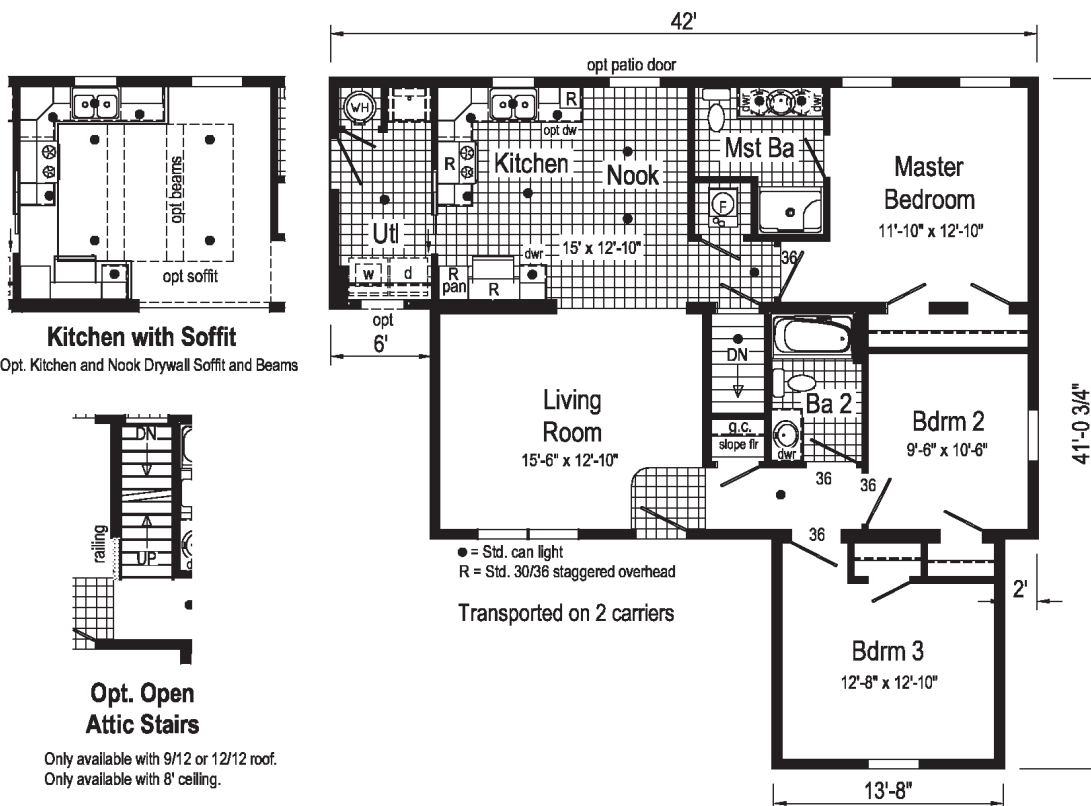
Goldsboro



3P2001R

42x42/36 Approx. 1253 sq ft

Some features shown may be optional or added on-site by others.



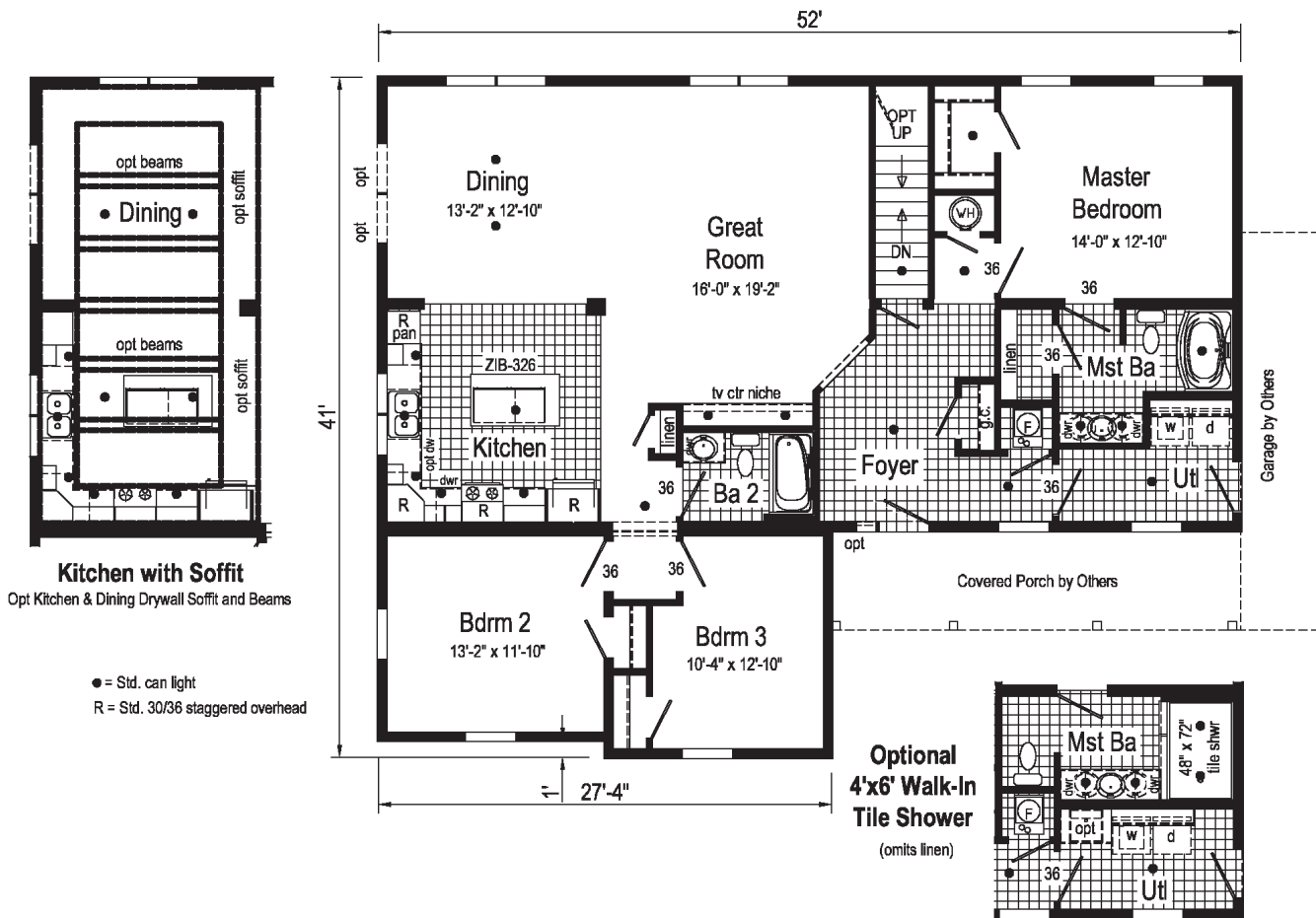
Sandalwood



3P2002R

42x52 Approx. 1781 sq ft

Some features shown may be optional or added on-site by others.



Hollingsworth

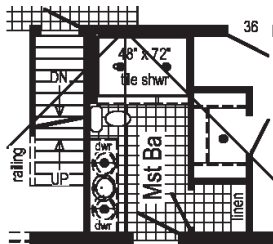


3P2003R

42x52/44 Approx. 1646 sq ft

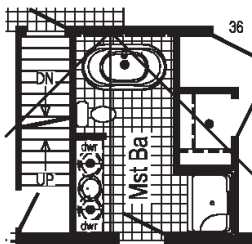
Some features shown may be optional or added on-site by others.

Opt. Open Attic Stairs
Only available with 9/12 or 12/12 roof (8' ceiling only) (omits g.c.)

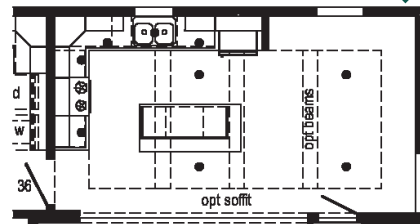


Optional 4'x6' Walk-In Tile Shower

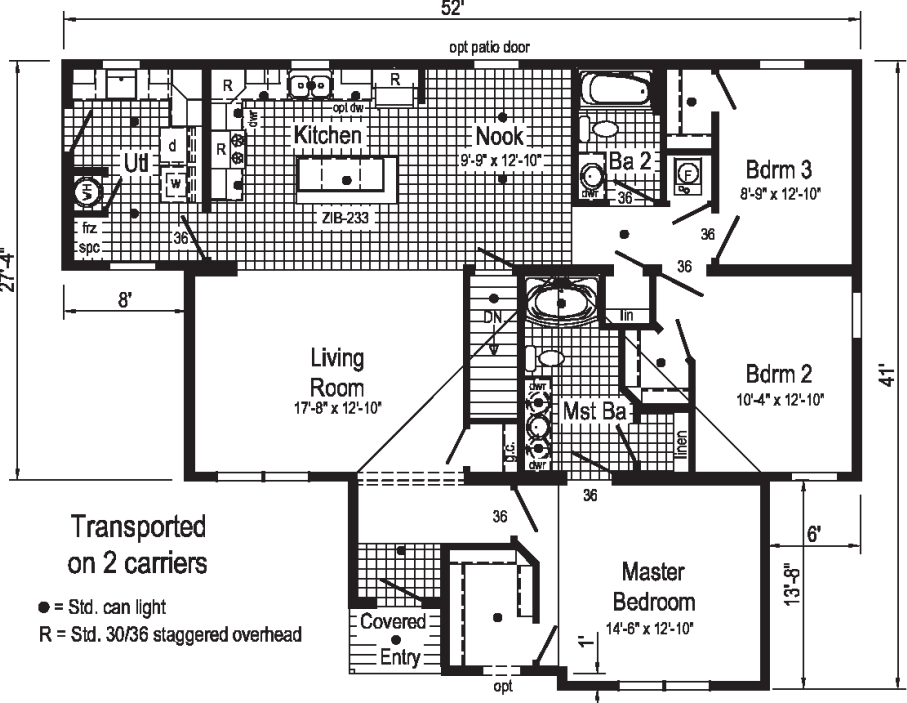
Optional Attic Stairs
(omits g.c.)



Optional Glamour Bath
(omits linen)



Kitchen with Soffit
Opt. Kitchen & Nook Drywall Soffit and Beams



Transported on 2 carriers
● = Std. can light
R = Std. 30/36 staggered overhead

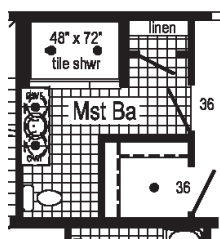
Chesterton



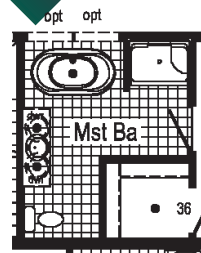
4P2001R

42x52 Approx. 1995 sq ft

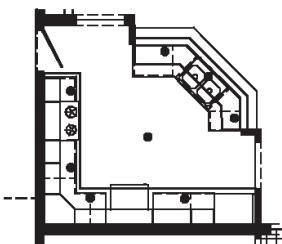
Some features shown may be optional or added on-site by others.



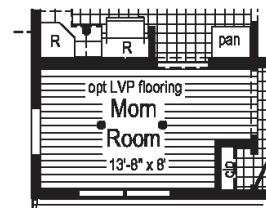
Optional 4'x6' Walk-In Tile Shower



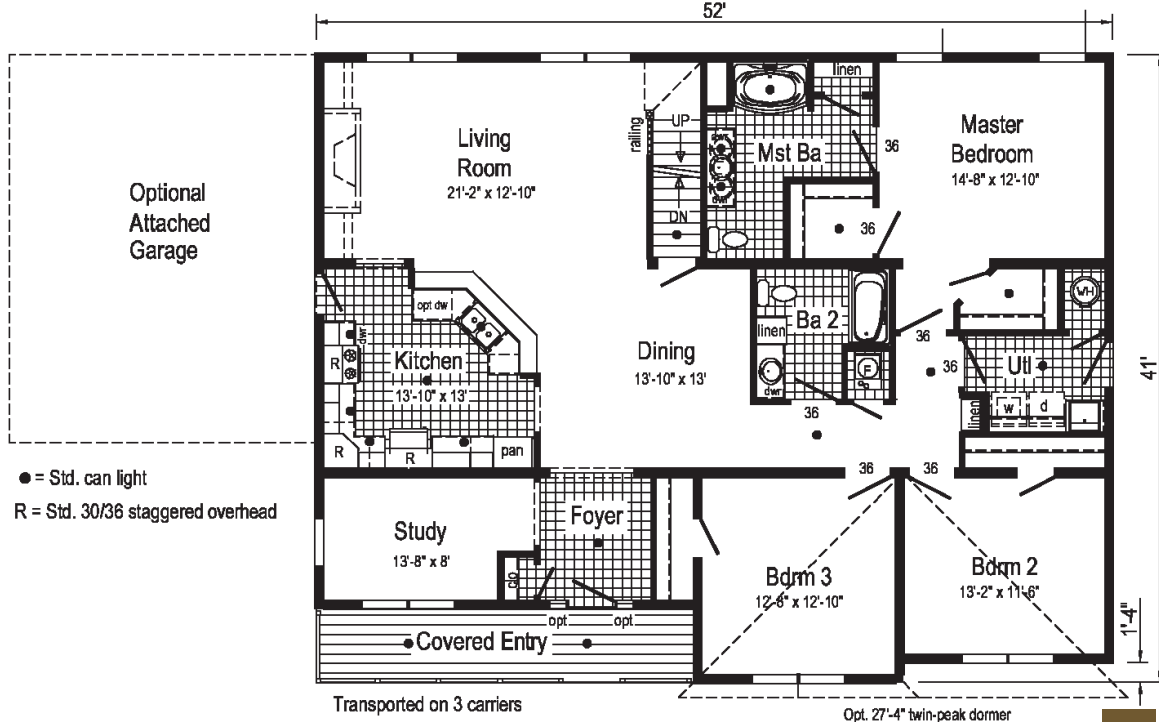
Optional Glamour Bath
(omits lin)



Kitchen with Soffit
Optional full perimeter Drywall Soffit and Beams Not Available.



Optional Morning Room
Replaces Study





PENNWEST

reserve

R

CAPE

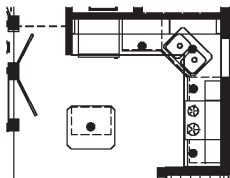
Nantucket



2PC2001R

28x36 Main Floor Approx. 883 sq ft
Proposed Second Floor Approx. 561 sq ft

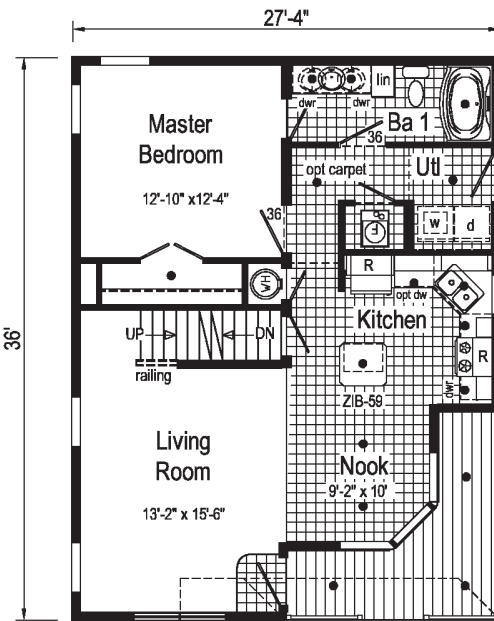
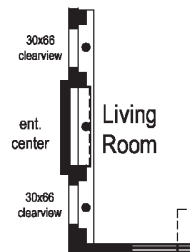
Some features shown may be optional or added on-site by others.



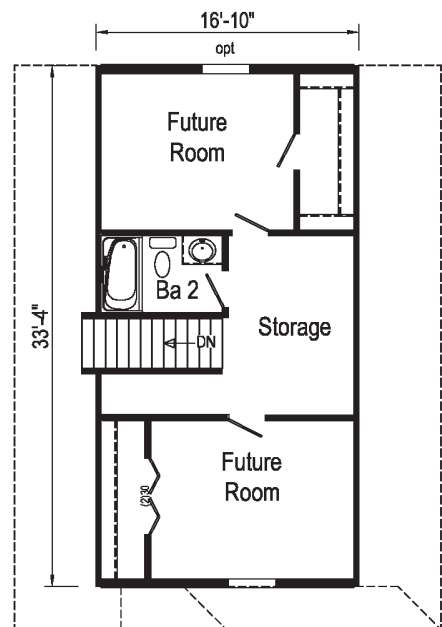
Kitchen with Soffit

Optional full perimeter Drywall Soffit and Beams at Kitchen & Nook Not Available.

Optional Clearview Entertainment Wall



MAIN FLOOR
 Transported on 1 carrier



SECOND FLOOR

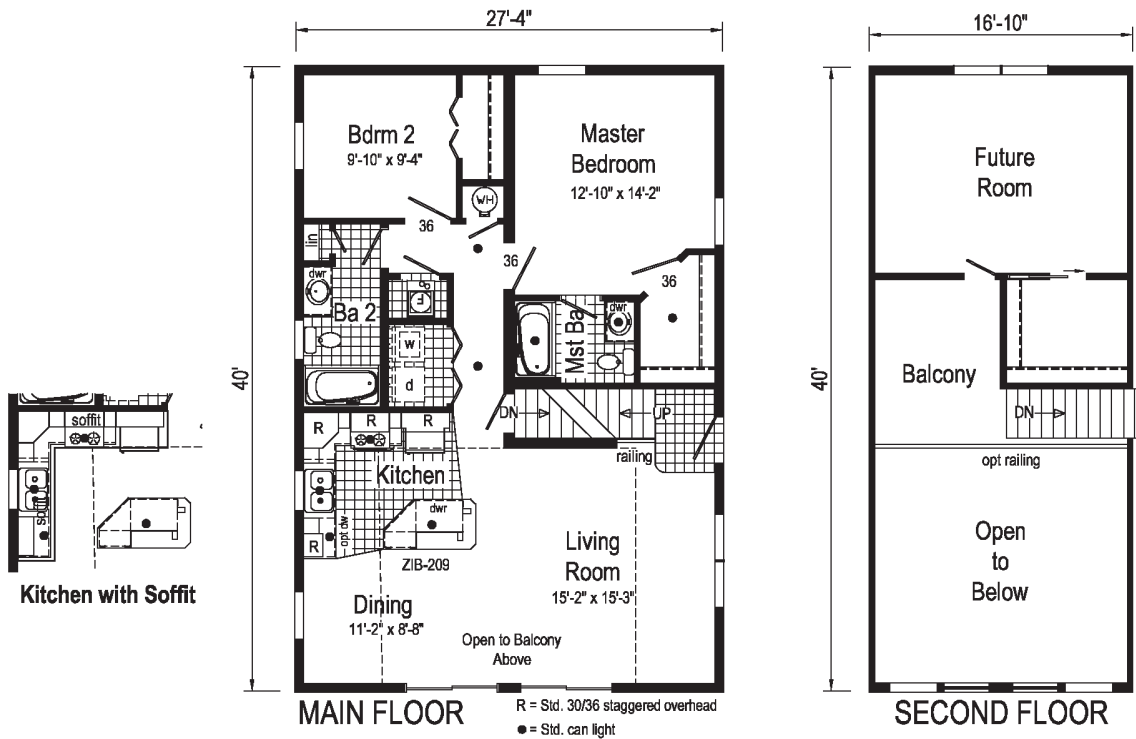
Bayshore



2PC2002R

28x40 Main Floor Approx. 1093 sq ft
Proposed Second Floor Approx. 410 sq ft

Some features shown may be optional or added on-site by others.



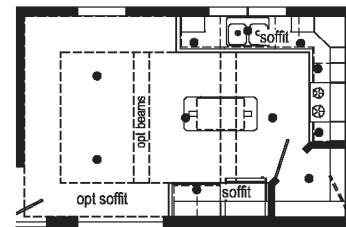
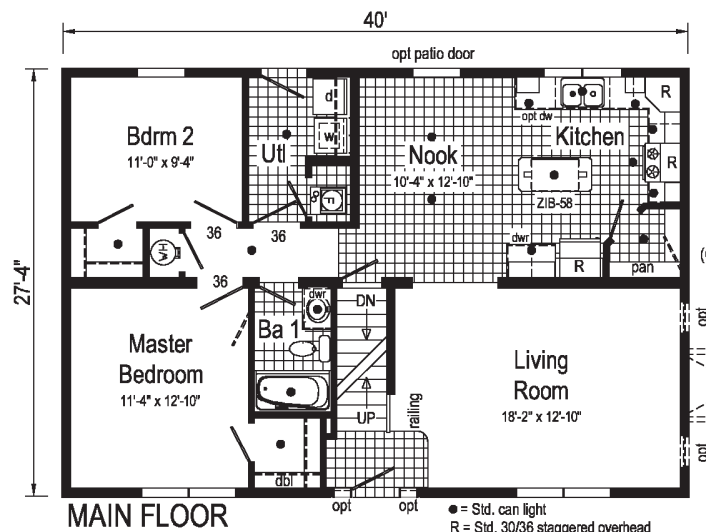
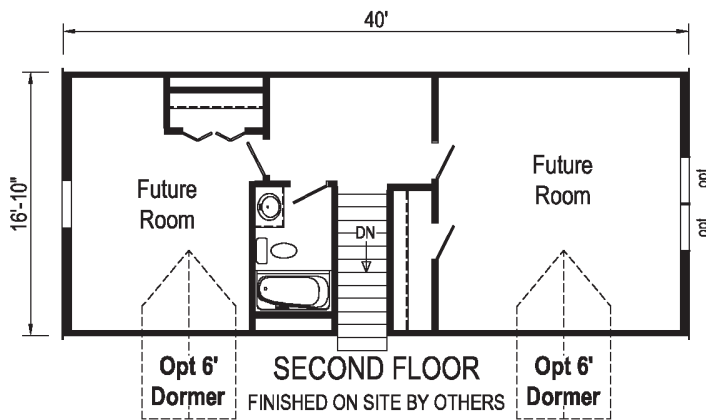
Wilmington



2PC2003R

28x40 Main Floor Approx. 1093 sq ft
Proposed Second Floor Approx. 673 sq ft

Some features shown may be optional or added on-site by others.



Kitchen with Soffit
Opt. Kitchen & Nook Drywall Soffit and Beams

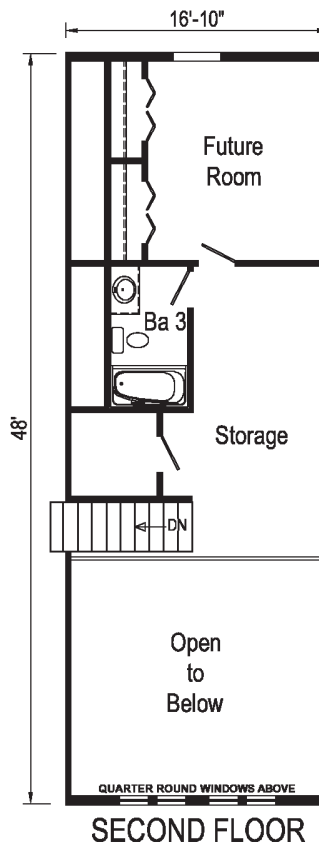
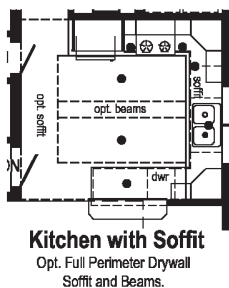
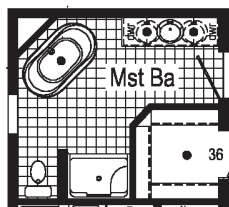
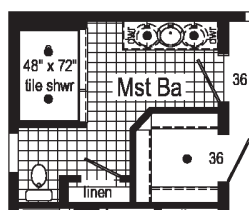
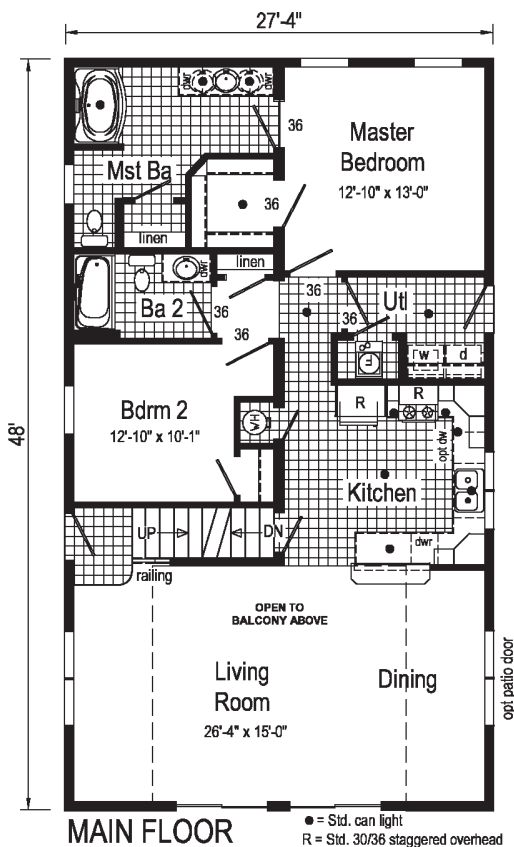
Bayview



2PC2004R

28x48 Main Floor Approx. 1312 sq ft
Proposed Second Floor Approx. 546 sq ft

Some features shown may be optional or added on-site by others.



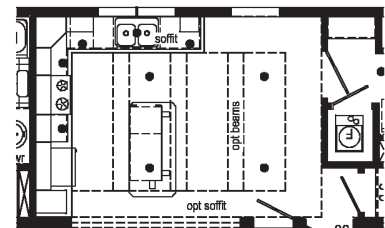
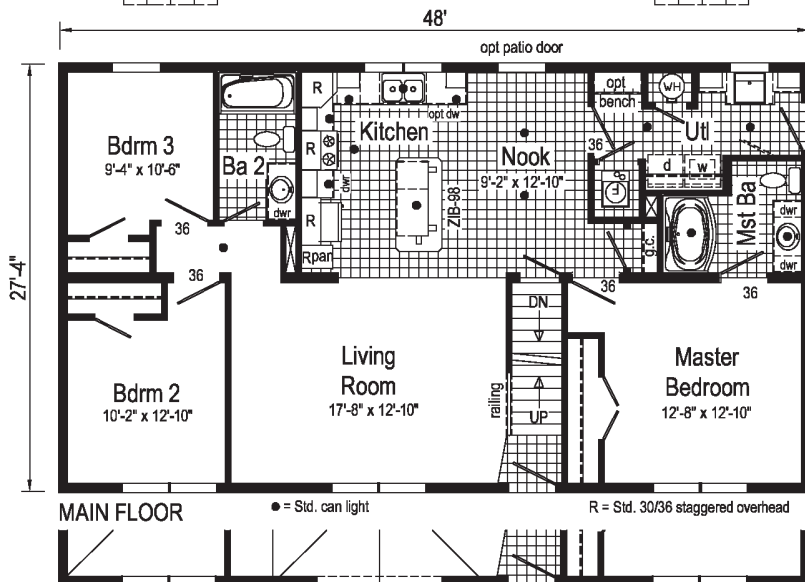
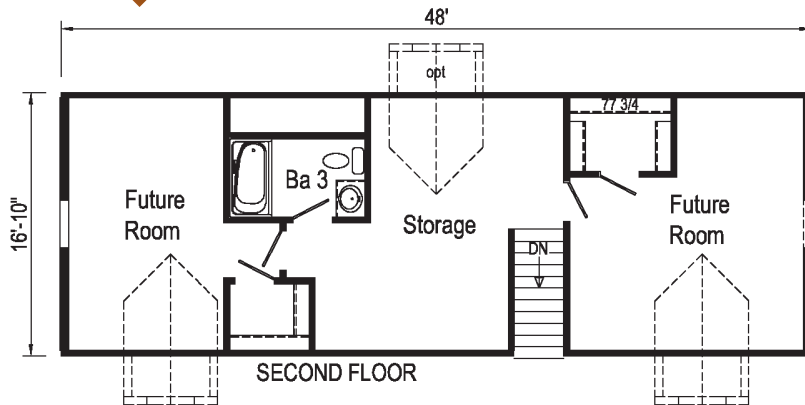
Norwick



2PC2005R

28x48 Main Floor Approx. 1312 sq ft
Proposed Second Floor Approx. 808 sq ft

Some features shown may be optional or added on-site by others.



Kitchen with Soffit
 Opt. Kitchen & Nook Drywall Soffit and Beams

Opt. 27'-4" dormer w/ bump-out

Curb Side Exterior Options

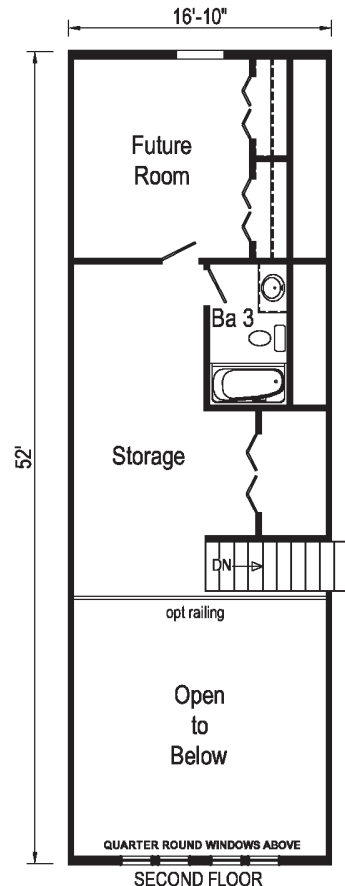
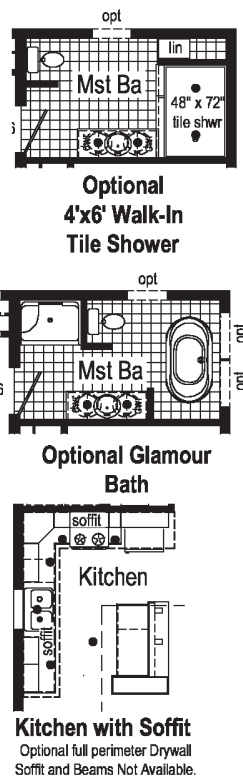
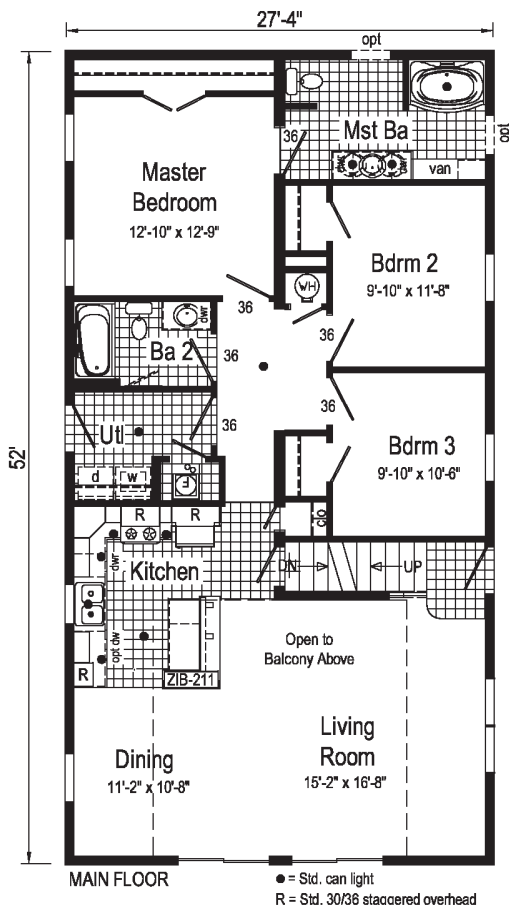
Baycrest



2PC2006R

**28x52 Main Floor Approx. 1421 sq ft
Proposed Second Floor Approx. 590 sq ft**

Some features shown may be optional or added on-site by others.



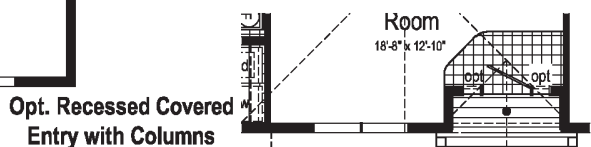
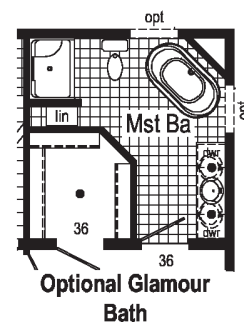
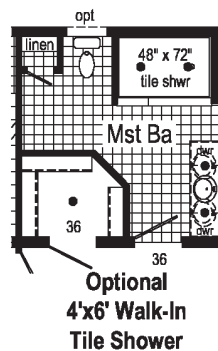
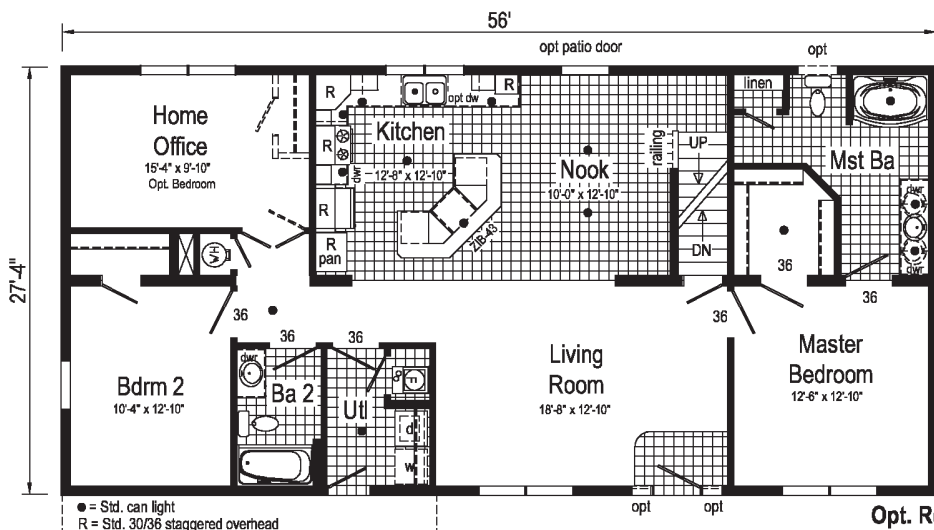
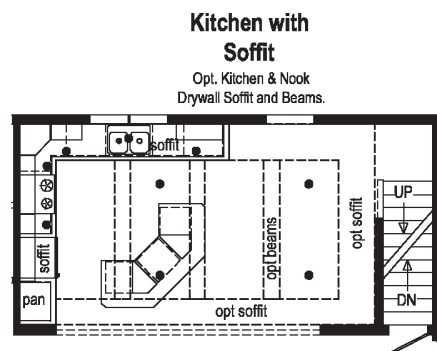
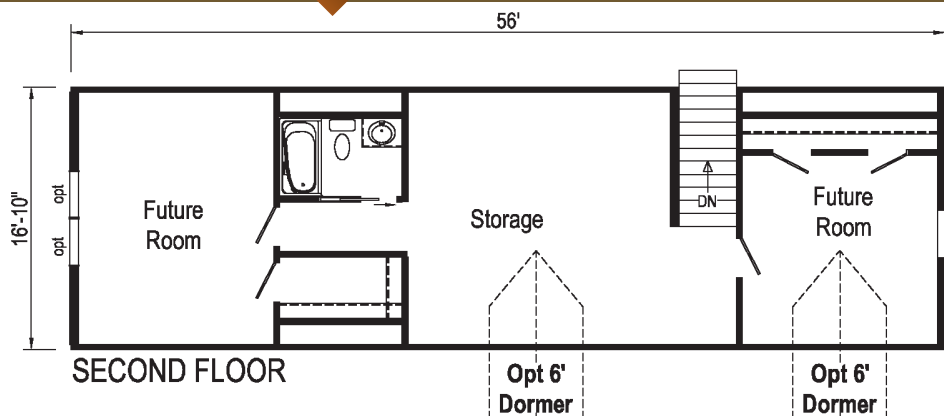
Livingston



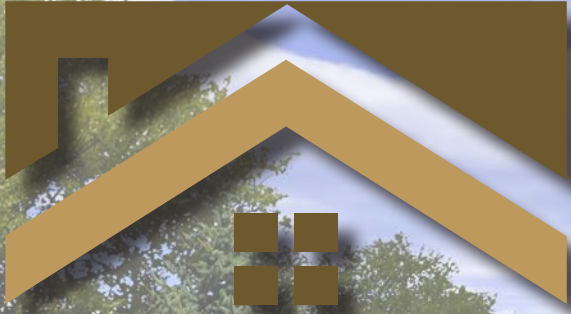
2PC2007R

28x56 Main Floor Approx. 1531 sq ft
Proposed Second Floor Approx. 943 sq ft

Some features shown may be optional or added on-site by others.



● = Std. can light
 R = Std. 30/36 staggered overhead



PENNWEST
H O M E S



Your Independent Retailer is:

Pennwest Homes
4 Pennwest Way Route 38
Emlenton, PA 16373
www.pennwesthomes.com

Connect with Us!

